

Epson business scanner range

Document management made easy



EPSON®
EXCEED YOUR VISION

Introducing Epson's business scanning solutions

Scanners are an essential part of any business – they are where physical information is transformed into manageable, secure digital content. We have made it our mission to become the innovation experts in this field, constantly striving to streamline scanning processes, achieve greater efficiency, and ultimately benefit businesses everywhere.

We offer some of the highest-quality, reliable and robust business scanning solutions available, which can quickly capture, convert and distribute scanned information within your organisation. You will be able to significantly cut the number of steps usually required and save more time. From portable USB powered sheetfed devices, to production-level, high capacity A3 technology, we ensure every possible scanning need is met.

Additional business benefits

Whether you're scanning media as small as a stamp, or as large as an A0 blueprint, it's easy to capture every aspect at high resolutions and reproduce them on almost any scale.

- Scan documents easily
- Save on office storage space
- Access historic documents with ease
- Reduce file loss, improving disaster recovery
- Access files at the same time as others
- Scan to email, cloud, local folder, mobile and more



Epson advanced capture

For demanding scan requirements and high-output environments, our two-step scan process captures and sorts documents in seconds, thanks to advanced, pre-defined parameters set by you.



**One touch
profile
creation**



2D Barcode

**Barcodes for
document
sorting**



**Zonal OCR
for document
naming**

Epson Integration

Compatible with leading document, content and information software systems with included TWAIN and ISIS drivers for many of our devices.



1. Capture



Epson advanced paper capture solutions

Epson's Document Capture software suite is a range of easy-to-use scanning solutions for capturing, storing and routing business documents. Turn hard copy paper into usable electronic information.

- Suitable for both small businesses and large corporate organisations
- Boost productivity and efficiency
- Intuitive and easy to use
- Customise to suit your exact requirements



Document Capture Pro 2.0 is ideal for individuals who need to scan, save and share information with the business easily. The advanced document imaging features of DCP2.0 are easy to use, require no additional training, and support all common file formats including PDF, jpeg and tiff.



For our network scanners and multi function devices, **Document Capture Pro Server 2.0** is powerful server based software that allows administrators to manage advanced push scan functions without having to install software on individual computers. Scan to cloud, FTP and Microsoft SharePoint® at the touch of a button. For more advanced needs, add your own plugins with our self-developer kit.



Document Capture Pro Server 2.0 Authentication Edition lets IT infrastructure managers control and manage crucial scanning tasks centrally, including user access rights and logins, job profiles and even device management. Device access can be controlled by IT managers easily using LDAP Active Directory, User ID and password, Access Card login, and a PIN code. Upon authentication, users can access bespoke job profiles which ensure greater control and maximise data integrity. Additional lock down functions minimise unauthorised user access and profile amendments, which helps protect system integrity.

2. Enhance



Perfect images

Built into Document Capture Pro is Epson Scan 2.0 software, designed to control our Workforce range of business scanners. Packed with advanced features, it's designed to enhance and improve image quality so files can be created and altered with ease.

Dual Output

Deliver two images with just one scan by simultaneously sending a black and white TIF file to your desktop, and a colour PDF to a shared folder.

Auto-rotated

Reduce preparation time and stack documents in any way – Epson Scan 2.0 will automatically rearrange so they are facing the right way up.

De-skewed

Straighten documents to make them easier to read with Epson Scan 2.0.

Enhanced text

Select text enhancement to make scanned text sharper and easier to read.

Resolution

Adjust the scanner's dpi settings to greatly enhance or reduce the image detail as required.

Hole Punch

Remove unsightly punch holes from the document automatically by selecting this feature for a professional finish.

3. Separate



4. Manage

Separated documents

Sort documents easily with automatic document separation features.

OCR

Using DCP and Epson Scan 2.0 allows you to separate documents easily in a wide variety of languages, you can also set up file names and locations for ease of document management.

Fixed page

Separates each specified page and splits into files.

Blank Page

Sensitivity detection can be set to low, medium or high to separate documents.

Barcode

Uses a wide variety of bar codes, such as 1D and 2D to separate documents

Patch Code

Detects the following patch codes to separate documents: Patch 1, 2, 3, 4, 6, T.

Epson Device Admin

Our latest version of EDA enables you to easily manage an entire fleet of printers and scanners remotely² – with full control, including the ability to install, configure, monitor, maintain and troubleshoot your devices for increased productivity and cost savings.

- Centrally monitor and manage devices
- Devices can be managed around your unique needs, to save time and control costs
- Added efficiency thanks to an intuitive interface
- Limits the number of steps required to complete tasks to streamline software operation
- Report on device activity



NFC¹ / Wi-Fi / Wi-Fi direct

Receive scan data and edit it wirelessly – rotate files, order multiple pages, and send via email to cloud storage or other applications. This technology works with the Epson Document Scan app.

Auto scan mode

Scan quickly and easily at 100% size with Full Auto Mode, without having to select any settings or preview your image. What's more, documents are processed as one file, not scanned as multiple PDFs, for greater efficiency and a smoother workflow.







Get to know our sheetfed scan solutions

Fast, reliable and versatile, our sheetfed scan solutions can boost productivity in the workplace. Increasingly, organisations are realising the importance of improving their document management processes, which is why our solutions are designed to boost efficiency by scanning, digitising and sharing files quickly and easily.



	Model	Basic features	Portable	Desktop	Wireless	Network
	DS-30	Get fast, powerful and high-quality scanning from a device weighing only 325g. Scan speed: 4ppm ADF: 1 Duty cycle: 25	•	–	–	–
	DS-310	Scan a range of media on the go with a lightweight device and super fast 3.0 USB connectivity. Scan speed: 25ppm/50ipm ADF: 20 Duty cycle: 500	•	•	–	–
	DS-360W	Built in battery and wireless connectivity allows you to scan on the go with this highly efficient portable scanner. Scan speed: 25ppm/50ipm ADF: 20 Duty cycle: 500	•	•	•	–
	DS-410	Achieve excellent productivity at an affordable price using this versatile sheet-fed scanner with image enhancement technology. Scan speed: 26ppm/52ipm ADF: 50 Duty cycle: 3000	–	•	–	–
	DS-570W	Instantly connect thanks to the inbuilt Wi-Fi and NFC connectivity which allows you to scan documents easily to mobile, tablet and Wi-Fi enabled devices. Scan speed: 35ppm/70ipm ADF: 50 Duty cycle: 4000	–	•	•	Optional





	Model	Basic features	Desktop	High speed	High volume	Network
	DS-530	<p>The intelligent scanning choice with powerful media handling and innovative smart features for a high level of data integrity.</p> <p>Scan speed: 35ppm/70ipm ADF: 50 Duty cycle: 4000</p>	•	–	–	Optional
	DS-530N	<p>Create one touch scan profiles to easily integrate this affordable network ready model into your business environment.</p> <p>Scan speed: 35ppm/70ipm ADF: 50 Duty cycle: 4000</p>	•	–	–	•
	DS-770	<p>The perfect choice for high capacity and fast scanning – with intelligent features to optimise your workflows. Scan a wide variety of documents quickly and efficiently.</p> <p>Scan speed: 45ppm/90ipm ADF: 100 Duty cycle: 5000</p>	•	•	•	Optional
	DS-780N	<p>Our latest scanning innovation for multi-users includes an integrated network panel. Scan mixed media fast, and switch to slow for fragile documents.</p> <p>Scan speed: 45ppm/90ipm ADF: 100 Duty cycle: 5000</p>	•	•	•	•
	DS-860	<p>Built for high volume scanning and the most demanding environments. Harness our fastest A4 sheetfed scanner speed for highly efficient scanning.</p> <p>Scan speed: 65ppm/130ipm ADF: 80 Duty cycle: 6000</p>	•	•	•	Optional
	DS-860N	<p>Save time by creating pre-defined job profiles for rapid routing of documents. Scan to job commands such as “scan to email” directly from the scanner for easy network sharing.</p> <p>Scan speed: 65ppm/130ipm ADF: 80 Duty cycle: 6000</p>	•	•	•	•

Discover our flatbed scanners

Our robust and high-speed flatbed scanners offer versatility, enabling you to scan different sizes and types of media up to A3 size. With our A4, A3 and all-in-one solutions, you can scan a range of documents including passports, books and magazines, high-resolution images, and negatives such as X-rays or film.



	Model	Size	Basic features	Desktop	High speed	High volume	Network
	DS-1630	A4	Scan a wide range of challenging documents, including books, passports and delicate items. Scan speed: 25ppm/10ipm ADF: 50 Duty cycle: 1500	•	–	–	Optional
	DS-1660W	A4	Enhance productivity with this fast and versatile wireless scanner that offers the smallest footprint in its class. Scan speed: 25ppm/10ipm ADF: 50 Duty cycle: 1500	•	–	–	–
	DS-530 Plus Flatbed	A4	Benefit from powerful media handling and innovative smart features for a high level of data integrity. Scan speed: 35ppm/70ipm ADF: 50 Duty cycle: 4000	•	–	–	–
	DS-5500	A4	Easily capture and convert large, bound or fragile documents on a network compatible, flatbed. Scan speed: – ADF: – Duty cycle: –	•	–	–	Optional
	DS-6500	A4	High capacity lets you scan up to 25 pages per minute. Scan speed: 25ppm/50ipm ADF: 100 Duty cycle: 3000	•	–	–	Optional
	DS-7500	A4	High capacity lets you scan up to 40 pages per minute. Scan speed: 40ppm/80ipm ADF: 100 Duty cycle: 4000	•	•	•	Optional
	DS-770 Plus Flatbed	A4	Scan a variety of documents quickly and efficiently, with instant file storage and share options. Scan speed: 45ppm/90ipm ADF: 100 Duty cycle: 5000	•	–	•	–
	DS-50000	A3	Easily capture and convert large, bound or fragile documents on a network compatible, flatbed. Scan speed: – ADF: – Duty cycle: –	•	–	–	Optional
	DS-60000	A3	Improve document workflow processes with this versatile A3 departmental flatbed scanner. Scan speed: 40ppm/80ipm ADF: 200 Duty cycle: 5000	•	•	•	Optional
	DS-70000	A3	Capture large batches of documents in a single go, quickly and efficiently. Scan speed: 70ppm/140ipm ADF: 200 Duty cycle: 8000	•	•	•	Optional

Stamp to plan scan solutions

Scan from as small as a postage stamp up to an A0 floorplan, using a variety of devices designed to suit your wide ranging requirements.



Multi-functional solutions

WF-5690

Save 50% on printing costs and up to 80% on energy use, with this 4-in-1 business inkjet printer.

WF-6590

Save time, money and energy with this high-capacity colour 4-in-1 printer, offering increased productivity and reduced intervention for busy offices.

WF-C869R

Save energy and reduce waste with this reliable 4-in-1 business MFP. It offers predictable printing costs and low user intervention.



Cheque solutions

TM-S1000

Process documents by format, including cheques and coupons, with two pocket support.

TM-S2000

Double-sided colour scanning and inkjet endorsement printing.

TM-S9000MJ

Double-sided colour scanning, endorsement inkjet printing and thermal receipt printing in one compact and efficient device.



Graphic solutions

Perfection V19/V39

Easy-to-use, USB-powered scanner with a new sleek and space-saving design – capture, store and share your images and documents quickly.

Perfection V850

Featuring enhanced high-pass optics that deliver the highest level of image quality with faster scan speeds. Convert a wide range of media and film formats into professional-quality digital images in an instant.

Expression 12000XL / Pro

Perform precision scanning of A3 graphics with accurate image reproduction of plans, x-rays and film negatives.



Large format solutions

T5200 MFP

Maximises performance in busy graphics, CAD and GIS production environments with powerful image processing and a fast print speed.

T7200 MFP

A highly productive 44-inch printer combining performance, quality and value to save both time and money.



Modern government solutions

Throughout the government sector, forms and applications are initiating crucial processes – from immigration and social welfare to planning and licensing. Our document scanners allow every department to ingest the wide-ranging documents they receive daily – facilitating a modern, secure and efficient level of public service.

Streamline your customer facing environments

Ideal for busy reception environments with a requirement for high efficiency, our scanners are designed to capture documents, forms and public identification for streamlined record-keeping – and even support secure remote access from smart devices.



Central back office

Front facing office



Meet the demands of public office

Our back office scanners are robust, fast and built for the extreme demands of back office departments – like planning, electoral services, immigration and social welfare.





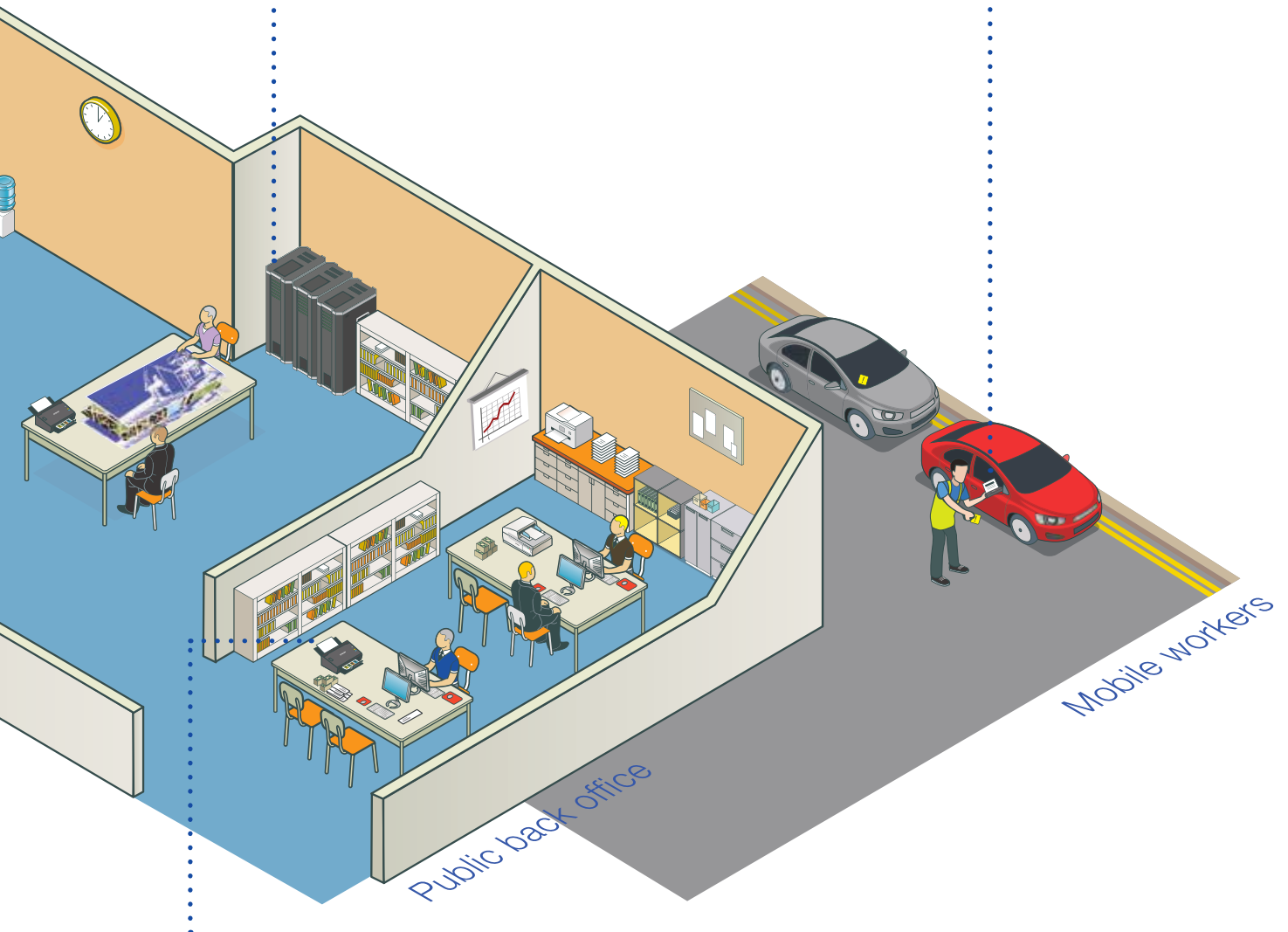
Process large files and historic records

Volume scanning capabilities facilitate case management and enable large documents to be stored in line with corporate policies. Transform historic records departments into usable work areas.



Enable true mobile working

Print critical forms and scan completed records on the move with Epson's mobile print and scan solutions – optimised for fast, accurate results from compact, lightweight devices.



Ensure your organisation runs smoothly

Streamline finance departments, ensuring invoices and payment transactions are recorded, automated and kept safe. Keep staff reviews, qualifications and team reviews up to date with secure user authenticated scanning solutions.



Efficient healthcare solutions

Achieve absolute precision across the healthcare sector. Our scanners capture the widest range of media – from X-rays and film to aged medical records, and long document reports for streamlined patient care.

Every detail – captured in confidence

Using the latest software, capture photographs, negatives and x-rays³ in high resolution detail, and to international standards such as DICOM.



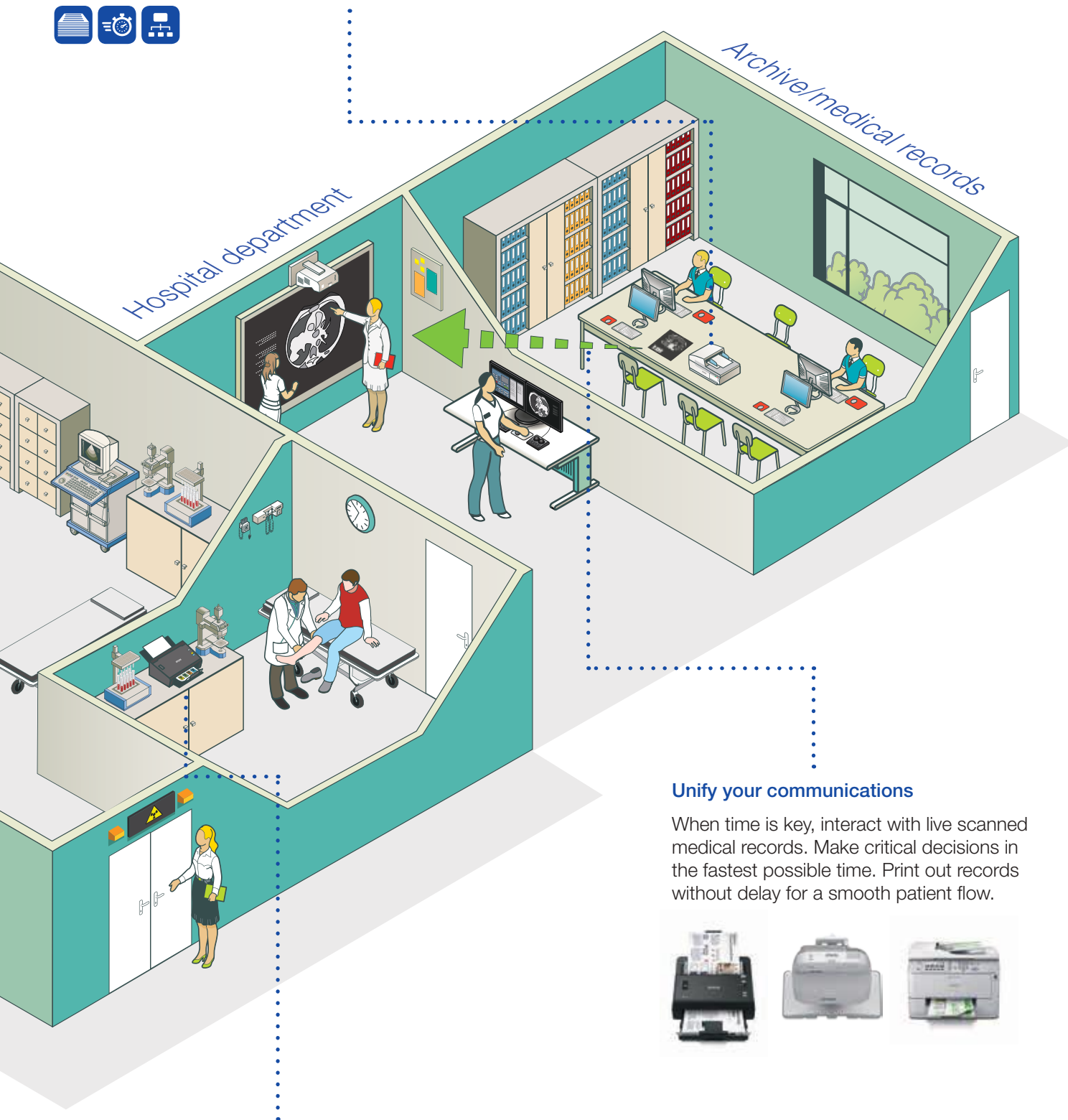
Patient care – digitized at the point of need

Scan directly to secure collaborative work areas or cloud services at the touch of a button. For doctor's surgeries, busy reception desks, where space is at a premium and efficient document processing is a must.



Scan aged paper records efficiently

Digitise the most challenging of medical records. Epson's high-speed A3 production devices with high capacity feeders and large flatbeds offer the flexibility required to scan every document in the file.



Unify your communications

When time is key, interact with live scanned medical records. Make critical decisions in the fastest possible time. Print out records without delay for a smooth patient flow.



Get vital results without delay

Scan, save, and send test results and lab research reports in ongoing cases – streamlining workflows to enable quicker responses for optimal patient care.



Accurate legal solutions

Manage legal documentation with ease – know where a document is scanned, how it is scanned and who scanned it with a range of Epson scanners that capture every aspect of a case.

Keep accurate records at all times

Make it easy and quick to keep accurate, complete digital records with a scanner designed for bulk and volume scanning environments. Save on document preparation with innovative software features like auto rotate to create perfect digital files.





Scan sensitive data

Capture every detail of photographs, transparencies and even fingerprints with Epson graphics scanners, using bundled software that understands how to repair aged media. Enjoy unparalleled precision and high definition.



Create a smooth workflow

Finger-touch interaction lets you view scanned evidence live in meetings. Highlight areas of interest and print out key actions for a unified approach to case management.



Capture information in any environment

Quickly capture additional information at a moment's notice, and save to a remote digital server or storage device, with compact solutions ideal for customer-facing environments.

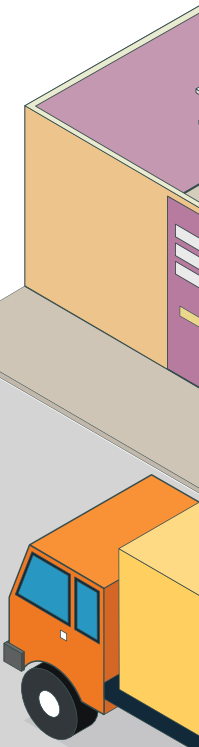


Agile mobile working solutions

From traditional mobile environments such as field sales and logistics applications, to modern hot desking and the gig economy, businesses need to ensure information is captured straight away.

Ensure customer focused service

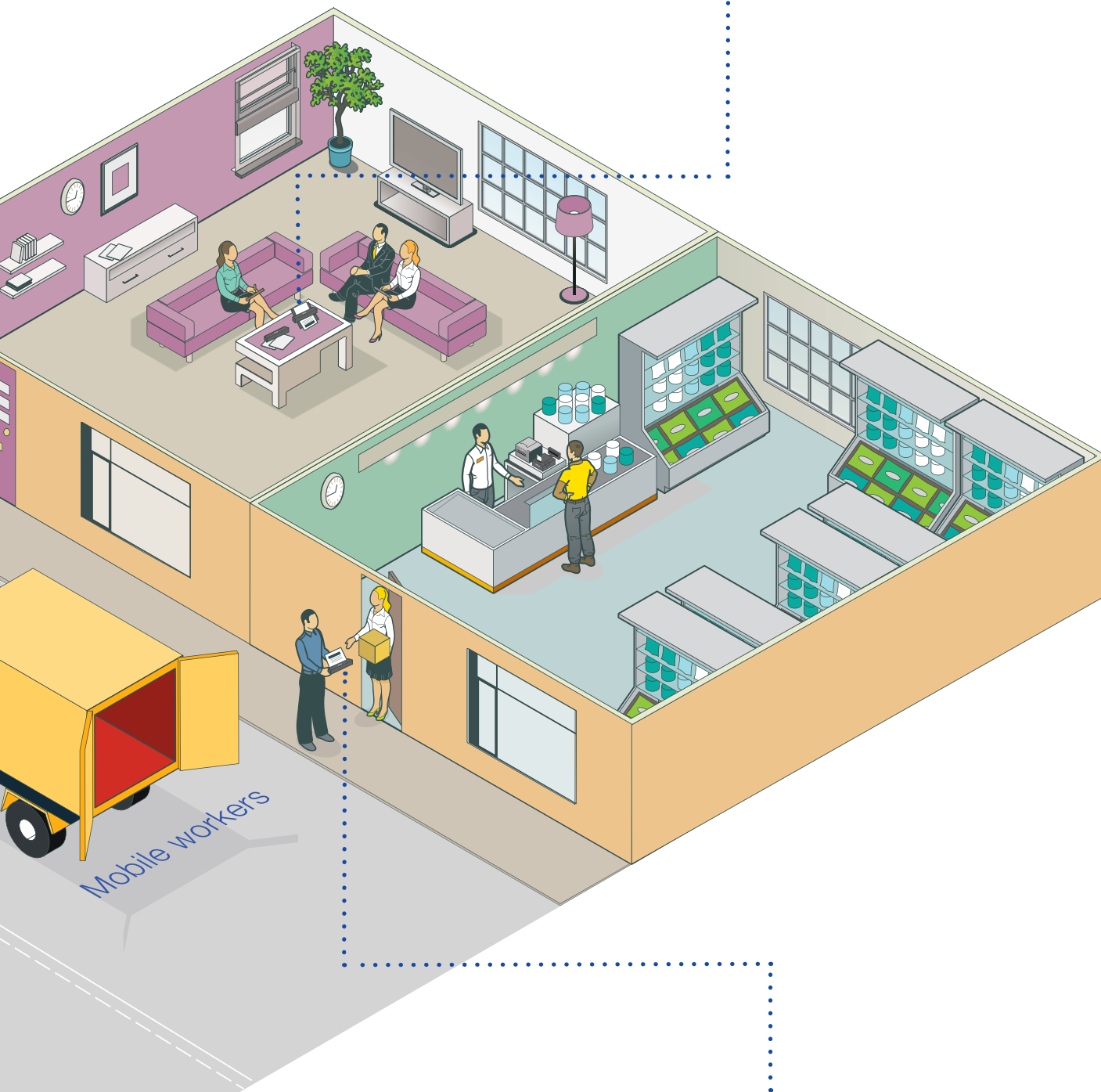
Complete with on-device control panel lock functions and authentication protocols. Build Epson scan solutions into customer facing environments for assisted service and self-service applications.





Empower mobile workers

Scan at the point of need with Wi-Fi direct portable, flatbed and sheet-fed scanning solutions. Enable employees to link mobile devices directly through software applications and responsive software.



Enable true mobile working

Print critical forms and scan completed records on the move with Epson's mobile print and scan solutions – optimized for fast, accurate results from compact, lightweight devices.



Customer-focused financial services solutions

Reduce time spent processing documents with Epson's scanners for financial services and insurance – from the processing of new customer applications to the addition of records to an existing claim, all in line with your existing workflow processes and legal obligations.

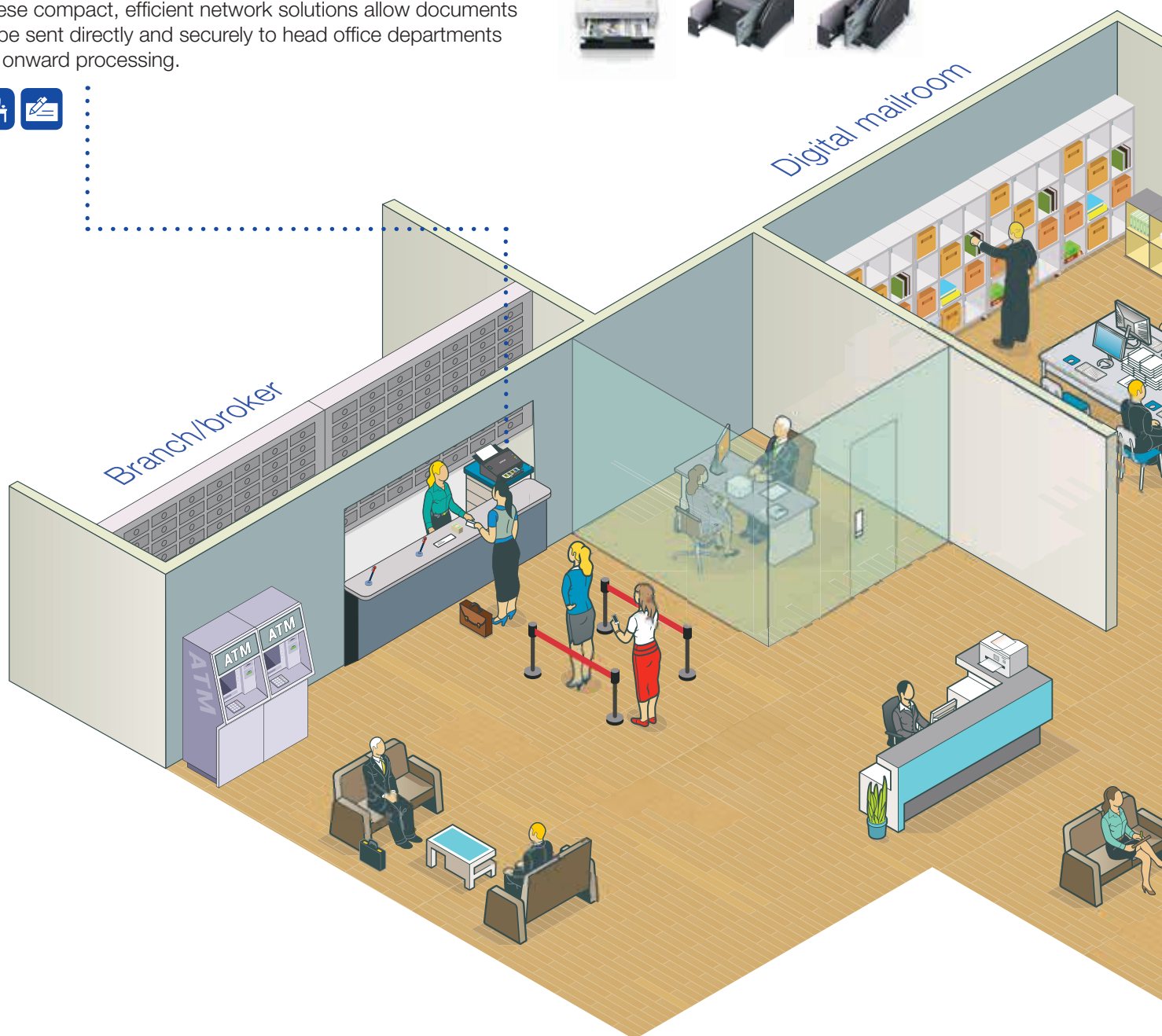
Process everyday transactions with ease

Quickly process, digitally manage and authenticate everyday transactions such as cheques and account applications. These compact, efficient network solutions allow documents to be sent directly and securely to head office departments for onward processing.



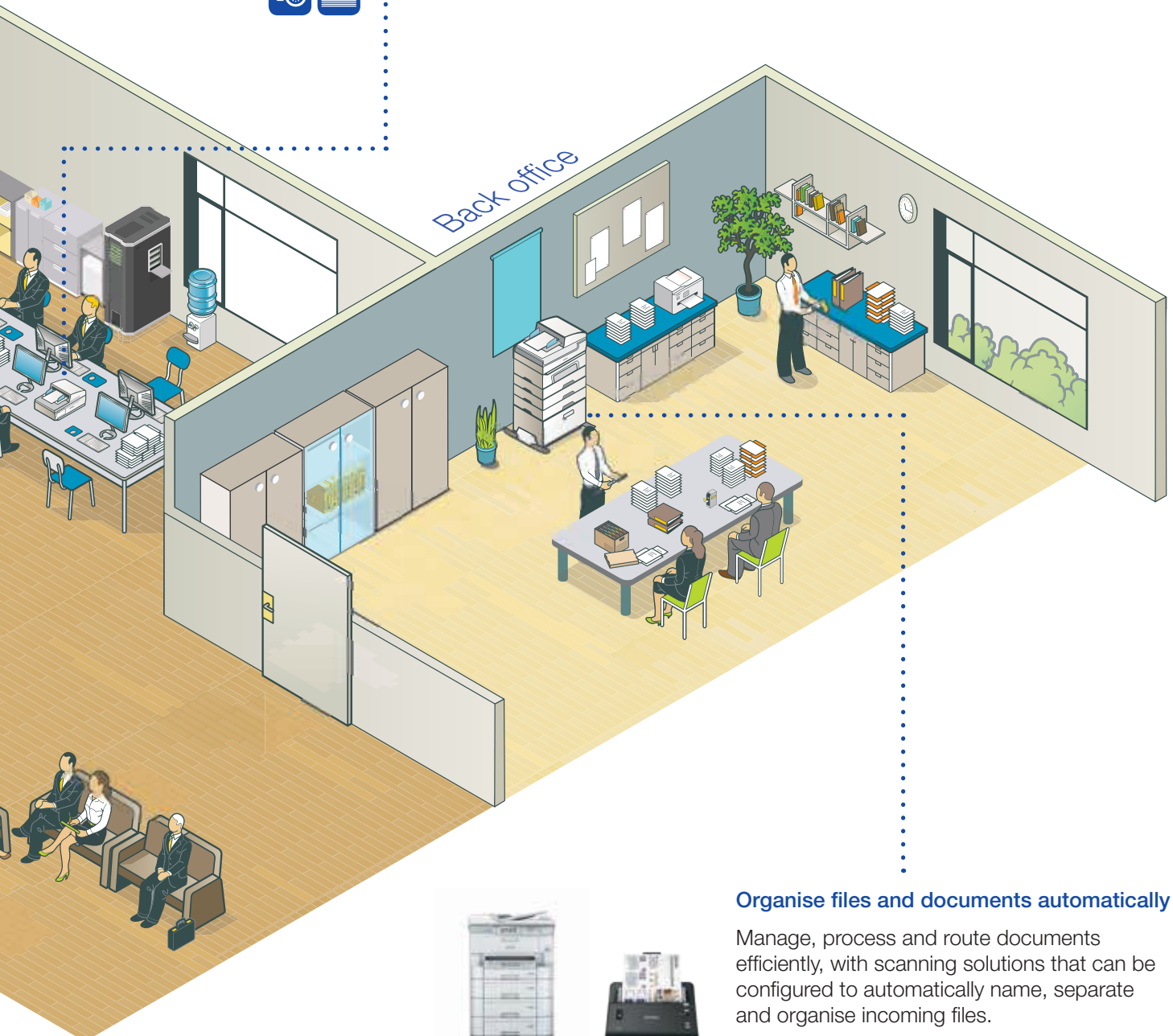
Digital mailroom

Branch/broker



Take control of the scanning process

Packed with advanced features like ultra-sonic double feed detection, automatic feed mode, slow mode and double feed detection skip, users have all the functionality they need to scan high volumes of complex documents in a controlled and efficient way.



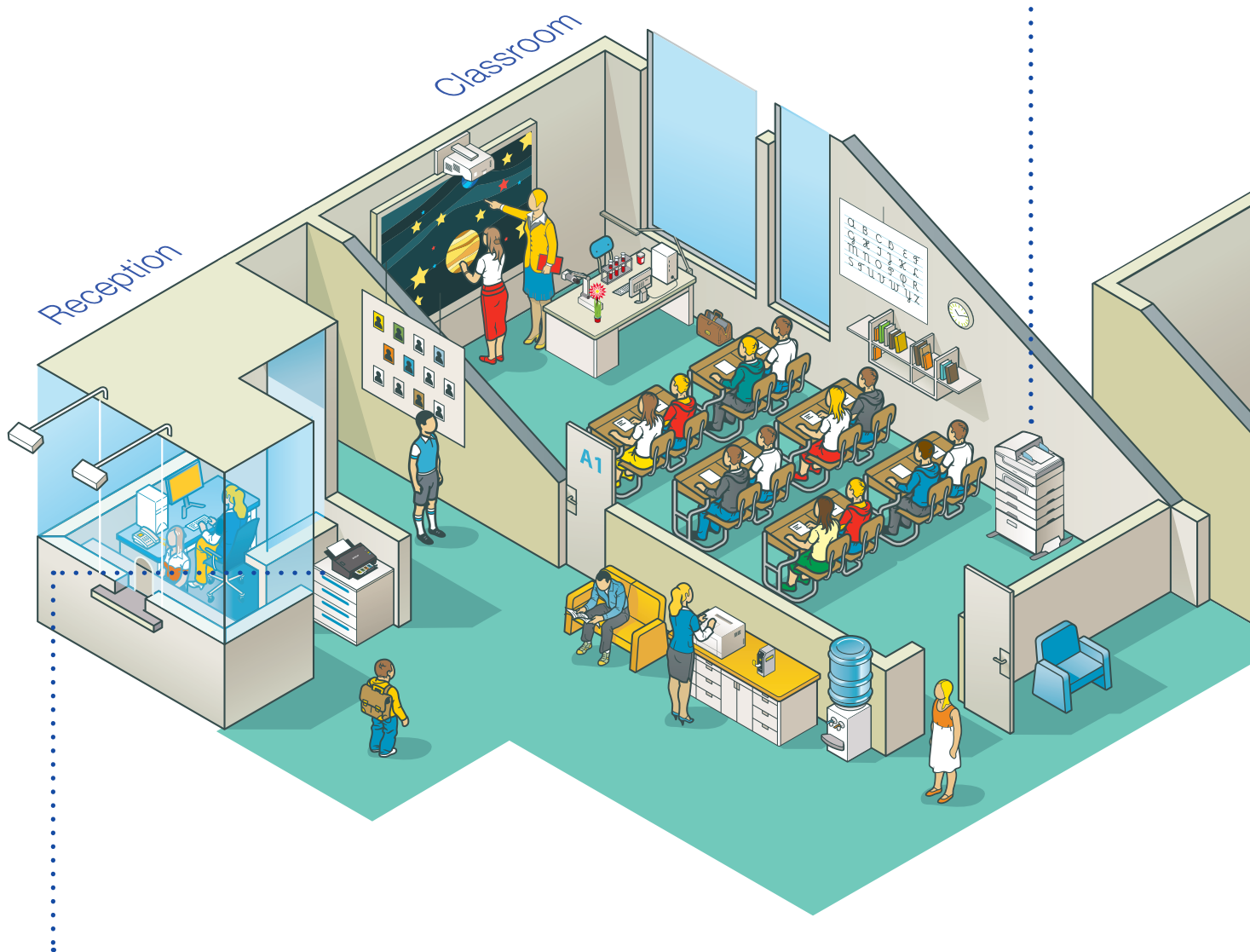
Organise files and documents automatically

Manage, process and route documents efficiently, with scanning solutions that can be configured to automatically name, separate and organise incoming files.



Active education solutions

Bring learning to life with scanning solutions that encourage collaboration and sharing – scan multiple pages at once, and send them straight to Microsoft Sharepoint, FTP, Cloud storage or any other chosen location with ease.



Safe student enrolment

Our scanning solutions integrate easily into your existing infrastructure and take the burden off your admin staff. Flow student records into systems securely and directly maintaining sensitive information.



• • • **Spend less time filing and more time teaching**

Create PDFs in seconds, ready for sharing with colleagues or students – or for filing. Efficiently manage large batches with ease by scanning multiple pages at once and create individual documents too.



Research and review with ease

Enable students to use our high speed devices to find your research material – from graphics, large construction plans to newspaper information.



Our scanning technology explained

Our sheetfed scanners are amongst the best that money can buy, but what makes them so special? Each one is crammed full of innovative technologies that enable them to achieve more, faster which is great news for you and your business. The following pages help to explain these technologies, and how they make a difference.



Double feed skip technology

Conversely, our Double Feed Detection Skip (DFDS) technology automatically cancels the double feed detection function, allowing a page to be scanned where it would normally be picked up as a double feed. This is extremely useful when scanning documents such as envelopes in mailrooms, or scanning documents with stickers or post-it notes on them.

- No need to intervene with the scanning process when dealing with a mixed batch of documents
- Rapid processing of difficult-to-capture documents
- Data integrity ensures every page is scanned
- Saves time as you don't need to continuously adjust the scanner software settings



Slow mode

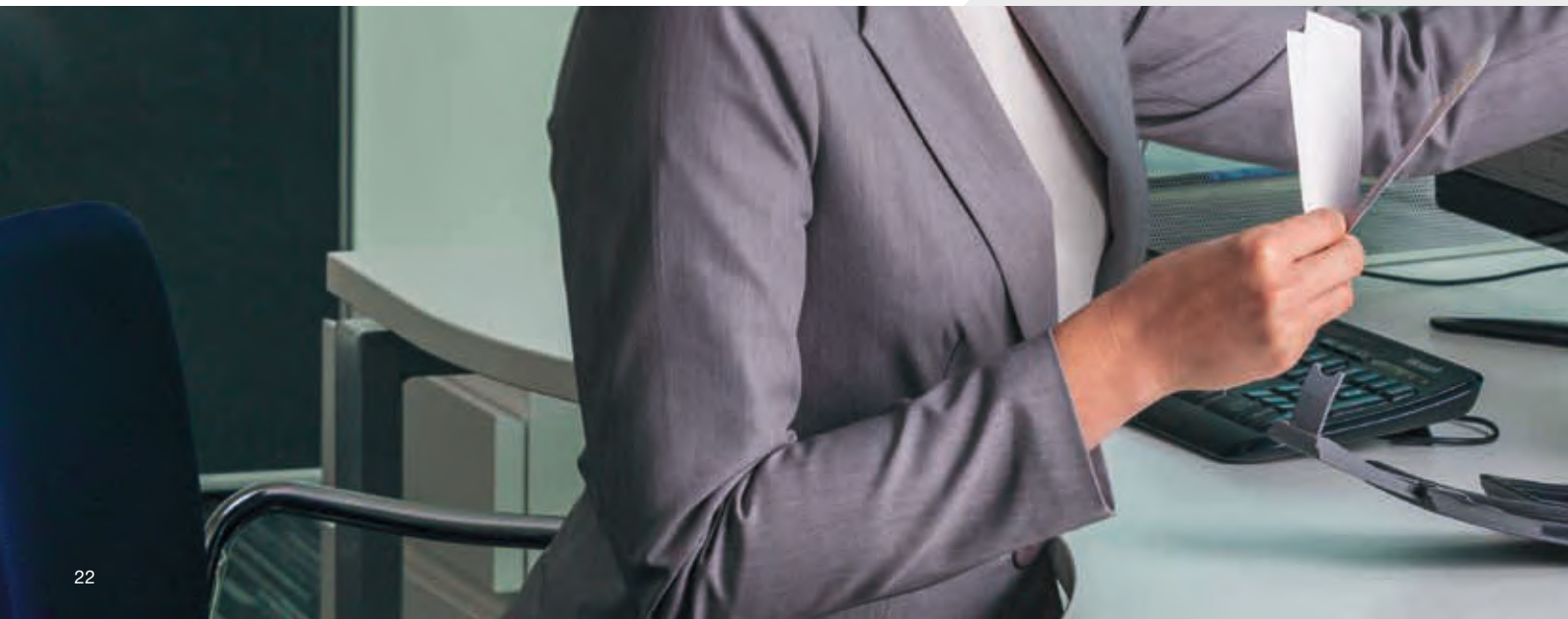
When the slow mode button is pressed on your scanner, the scanning speed will be reduced. This makes it easier to capture fragile or damaged documents, as there is no longer a need to go into the scanner's settings and increase the dpi resolution to achieve the same result.

The simple touch of the button is all it takes to reduce the roller speed, decrease document friction, and minimise the risk of damage to the document. And the added benefit is that your storage capacities are not compromised, as file sizes are not increased when using slow mode, unlike competitor models.

ReadyScan

Our ReadyScan technology features an LED lamp, instead of the previously-used Cold Cathode Fluorescent Lamp (CCFL) light source. This results in a number of efficiency benefits. With zero warm up time, you'll be able to benefit from immediate scanning. There's also no warm-up time when switching from scanning film to scanning normal photos or documents.

- Immediate scanning with no-warm up needed
- Up to 30% less power consumption during operation than previous models
- Less intervention due to more consistent light source over time, negating regular calibration



Double feed detection technology

Active Separation Roller

Our Active Separation Roller technology prevents double feeding. This helps to increase efficiency, and reduce downtime, ensuring your digital files are the same as the originals.

- Minimised double feeds and misfeeds
- Reduces downtime in office environments
- Greater durability before rollers need replacing
- Less chance of original document damage

Paper detection

Our paper length technology will also detect a double feed when paper is set to certain dimensions.

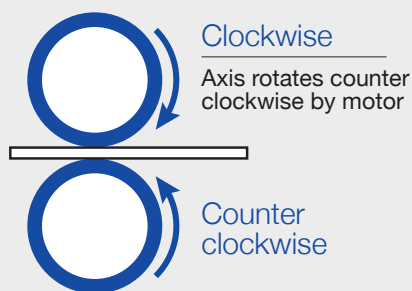
Additionally, our built-in software can automatically detect paper sizes ensuring your digital images are cropped to perfection. This optimises file sizes and creates an accurate representation of the original document.

Ultrasonic sensor

Our ultrasonic double feeding detection technology automatically identifies when two pages are stuck together. The scanner then stops the job in progress, allowing you to separate and rescan the pages without having to restart the entire scan job.

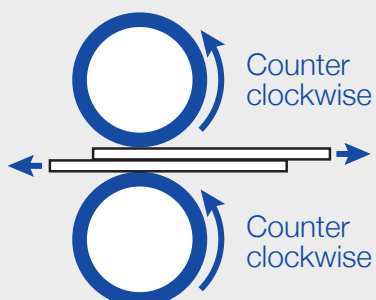
Step 1: 1 sheet

First document arrives at roller.



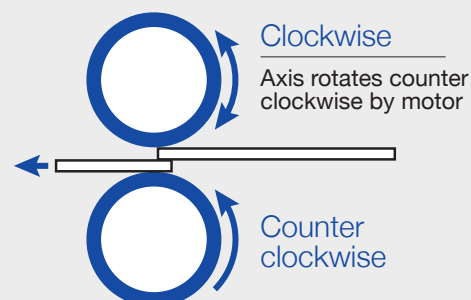
Step 2: 2 sheets

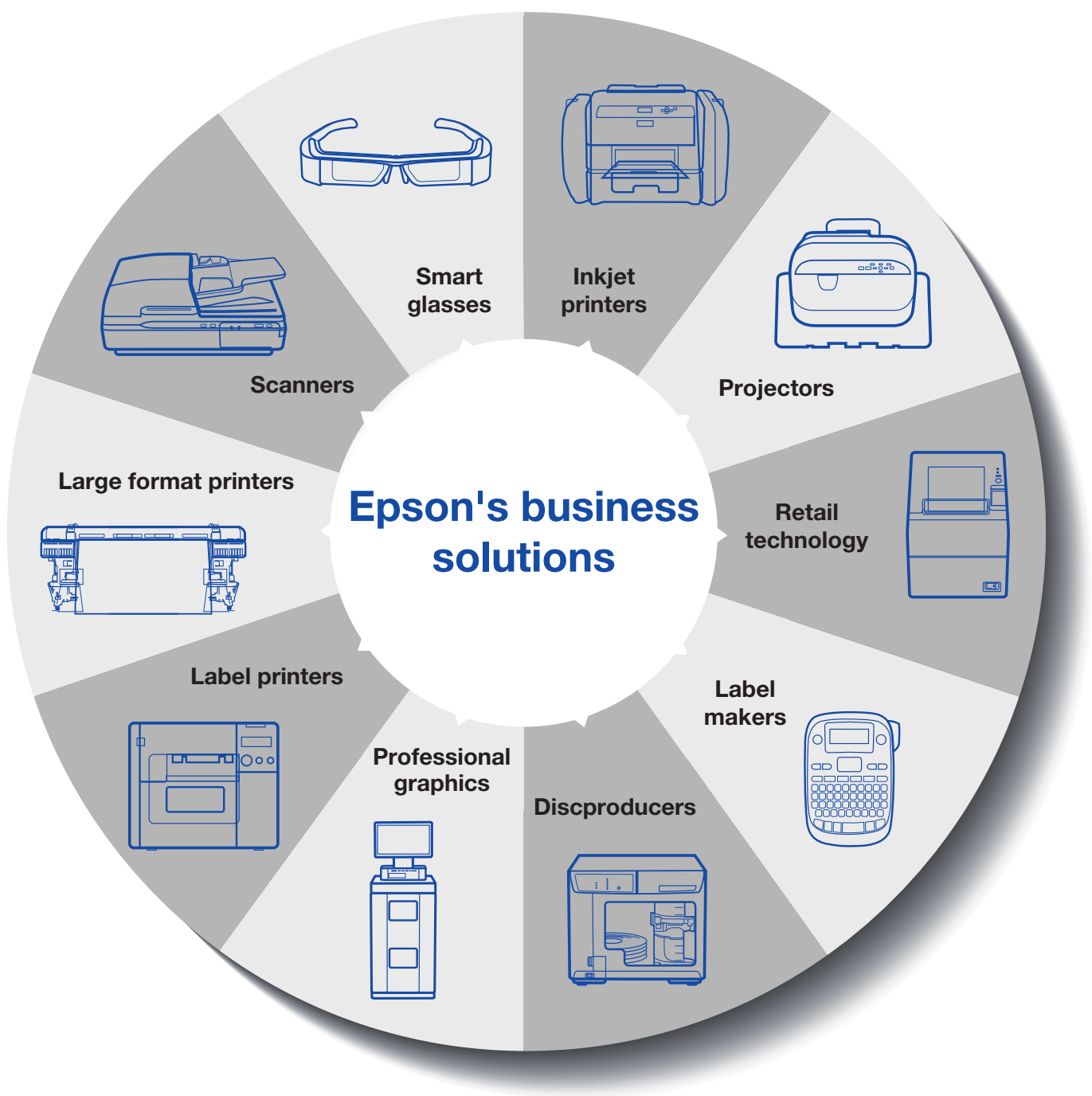
System automatically separates pages by changing direction.



Step 3: 2 sheets

Separation rollers then switch back to feed the document.





1. NFC is only supported on Android devices
2. Networked Business Inkjet Pro & Laser printers/MFPs, Business Scanners and Large Format Printers
3. Additional software required at extra cost

For more information please contact:

Home users: 0343 90 37766
Business users*: 0871 42 37766
Republic of Ireland: 01 436 7742

Or visit us at <https://www.epson.co.uk/contactus>

* 10p per minute plus network extras.

Trademarks and registered trademarks are the property of Seiko Epson Corporation or their respective owners.
Product information is subject to change without prior notice.

EPSON®