



**Colourful and
connected
LED printing**

www.brother.co.uk

**Quiet without
compromising
on speed or
quality**





Boosting your productivity

Brother's new range of colour LED printers are expertly engineered to help boost productivity in your home or small office. These devices are designed to be quiet, while still offering excellent quality and fast print speeds, combined with the user-friendly interface, you'll be ready to begin printing straight out of the box.



The perfect partner for your small office

The office and home environment is continuously changing with the goal of increasing efficiency and productivity. Being confident that you have a reliable device that prints quickly and effortlessly is key.



Stay connected

Make your day easier and your printing effortless, with a wide range of connectivity options including gigabit ethernet, 5GHz Wi-Fi and USB connection. Download the Brother Mobile Connect app, enabling you to print and scan* documents on the move.

**Multifunction devices only*

As business isn't always black and white, these devices utilise LED technology to produce professional quality colour prints to add impact to those important documents



Multitask with ease

With the 2-sided print feature, large paper capacity and automatic document feeder (ADF) you can multitask with ease and work for longer without having to replenish the paper tray. These specifications will help to boost productivity and keep your office running smoothly.



Print more

Keep your printing costs down with the generous in-box toner yields and separate drum to meet your higher volume print needs. Toners are easy to change and a high yield replacement toner printing up to 3,000 pages is available, reducing how often you replace your toners.



Secure by design

To keep pace with the ever-evolving legislation on privacy and data security, our devices offer the latest industry-standard security features to securely protect your data. Our security experts continuously research new enhancements to products, solutions and services to proactively ensure all our products are 'secure by design'. Brother uses triple-layer security at a device, network and document level. This offers added peace of mind and guarantees that the integrity of your data is maintained at every step.





Your colourful and connected LED printer range with fast and flawless print



PRINT



SCAN



COPY



FAX



5GHz
WIRELESS



Print up to 26 pages per minute

2-sided print, up to 10 sides per minute

Scan up to 21 images per minute

8.8cm colour touchscreen

Gigabit ethernet, 5GHz Wi-Fi and USB

512MB internal memory

50 sheet automatic document feeder

250 sheet paper input tray

Supplied with 1,000 page in-box toner.

3,000 page black, 2,300 page colour toners available

MFC-L3760CDW



Print up to 18 pages per minute
2-sided print, up to 7 sides per minute
Scan up to 21 images per minute
8.8cm colour touchscreen
Gigabit ethernet, 5GHz Wi-Fi and USB
512MB internal memory
50 sheet automatic document feeder
250 sheet paper input tray
1,000 page in-box toner.
3,000 page black, 2,300 page colour toners available

MFC-L3740CDW



Print up to 26 pages per minute
2-sided print, up to 10 sides per minute
Scan up to 21 images per minute
8.8cm colour touchscreen
Gigabit ethernet, 5GHz Wi-Fi and USB
512MB internal memory
50 sheet automatic document feeder
250 sheet paper input tray
1,000 page in-box toner.
3,000 page black, 2,300 page colour toners available

DCP-L3560CDW / DCP-L3555CDW



Print up to 18 pages per minute
2-sided print, up to 7 sides per minute
2 line LCD control panel
5GHz Wi-Fi and USB
512MB internal memory
250 sheet paper input tray
1,000 page in-box toner.
3,000 page black, 2,300 page colour toners available

DCP-L3520CDW / DCP-L3515CDW / DCP-L3527CDW



Print up to 26 pages per minute
2-sided print, up to 10 sides per minute
1 line LCD control panel
Gigabit ethernet, 5GHz Wi-Fi and USB
256MB internal memory
250 sheet paper input tray
1,000 page in-box toner.
3,000 page black, 2,300 page colour toners available

HL-L3240CDW



Print up to 18 pages per minute
1 line LCD control panel
5GHz Wi-Fi and USB
256MB internal memory
250 sheet paper input tray
1,000 page in-box toner.
3,000 page black, 2,300 page colour toners available

HL-L3220CW / HL-L3215CW





The automated toner subscription for your printer

All of the colour LED printers within this range are compatible with EcoPro - the print subscription service that automatically delivers toners to your door when you need them, so you never run out.

EcoPro is completely free for the first four months with the three models highlighted below and for added peace of mind, when you sign up to EcoPro, your printer is covered under warranty for any fixes or repairs.



PRINT



SCAN



COPY



FAX



5GHz
WIRELESS



Print up to 18 pages per minute

2-sided print, up to 7 sides per minute

Scan up to 21 images per minute

8.8cm colour touchscreen

Gigabit ethernet, 5GHz Wi-Fi and USB

512MB internal memory

50 sheet automatic document feeder

250 sheet paper input tray

500 page in-box toner.

3,000 page black, 2,300 page colour toners available



4 Month FREE TRIAL
toner subscription

MFC-L3740CDWE



PRINT



SCAN



COPY



5GHz
WIRELESS



Print up to 18 pages per minute

2-sided print, up to 7 sides per minute

2 line LCD control panel

5GHz Wi-Fi and USB

512MB internal memory

250 sheet paper input tray

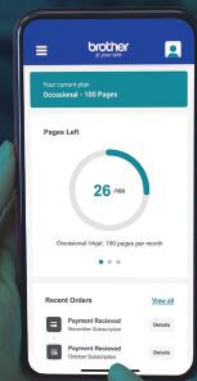
500 page in-box toner.

3,000 page black, 2,300 page colour toners available



4 Month FREE TRIAL
toner subscription

DCP-L3520CDWE



TO FIND OUT MORE

Whether you print a little or a lot, we have a flexible printing subscription plan to suit everyone.

Download the Brother Mobile Connect app or visit the website: brother.co.uk/ecopro



PRINT



5GHz
WIRELESS



Print up to 18 pages per minute

1 line LCD control panel

5GHz Wi-Fi and USB

256MB internal memory

250 sheet paper input tray

500 page in-box toner.

3,000 page black, 2,300 page colour toners available



4 Month FREE TRIAL
toner subscription

HL-L3220CWE



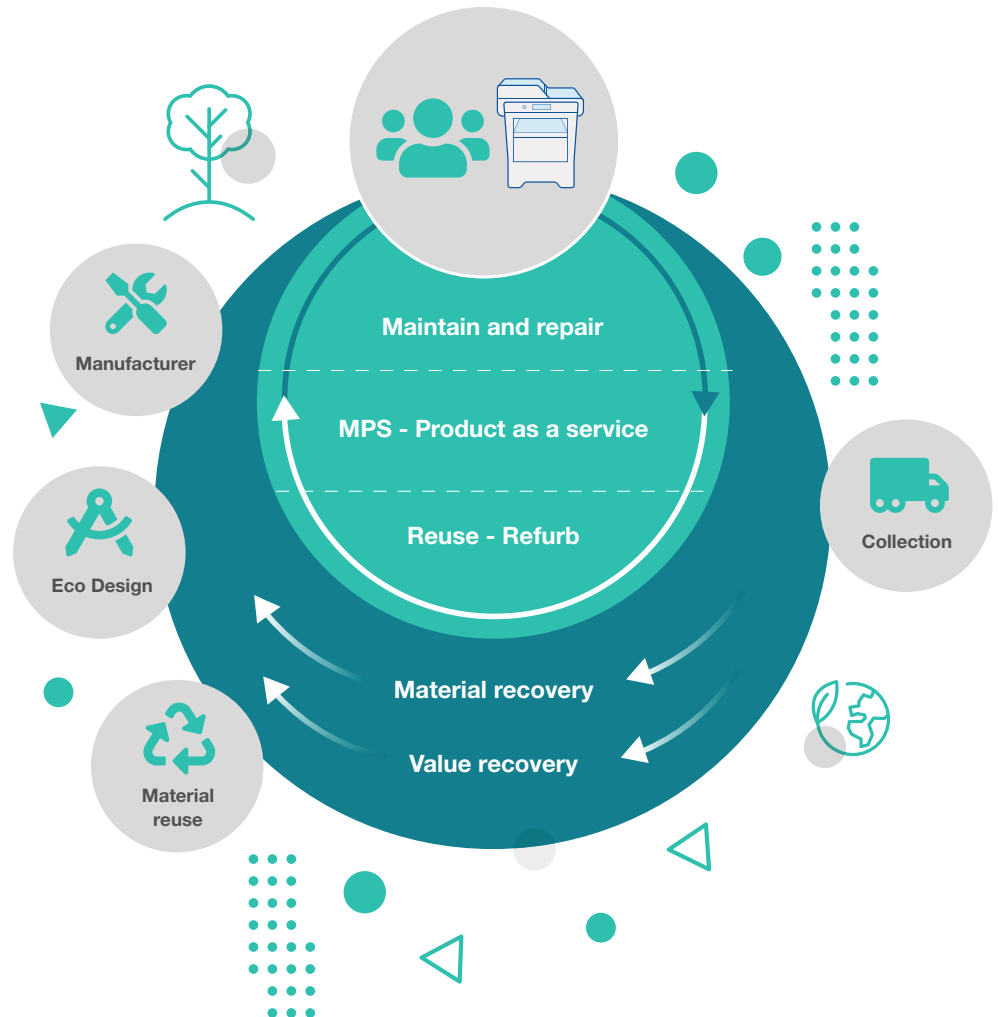
Dedicated to remanufacturing and reducing CO2

Our processes mean that 100% of the Brother cartridges you send back to us are remanufactured or recycled. Absolutely nothing goes to landfill and hasn't since 2013.

We are regularly investing in more sustainable products by working towards the circular economy principles of reduce, reuse, refurbish, repair and recycle with zero waste to landfill.

Dedicated carbon neutral remanufacturing facilities support our free toner cartridge return and recycle scheme. Every year, we remanufacture or recycle 3 million toner cartridges.

By remanufacturing 86% of our cartridges and each cartridge saving on average 2.05kg of CO2, we save around 5,300 tonnes of CO2 each year. In doing this, we are able to support your company in reducing its carbon footprint and can provide you with an annual certificate showing the amount of CO2 you have saved when returning cartridges via the bulk returns scheme.



Zero waste to landfill

Our European recycling facilities have been zero waste to landfill accredited since 2013 - stopping 1,500 tonnes of material from ending up in landfill every year.





Our commitment to local communities

Our Vietnam manufacturing facilities received Responsible Business Alliance (RBA) Gold certification, for our commitment to fulfilling our social responsibilities through the establishment of sustainable supply chains.

RBA's code of conduct sets out standards to ensure that working conditions are safe, that workers are treated with respect and dignity, and that business operations are conducted environmentally responsibly and ethically.



Responsible Business Alliance

Affiliate Member

COOL EARTH

As well as our market-leading, carbon-neutral toner remanufacturing program, we have been partners with global charity, Cool Earth for well over a decade. A UK-based non-profit organization, Cool Earth helps protect endangered rainforest, combats against climate change and provides employment for local people.

Together, we have supported 7 communities across Papua New Guinea and the Peruvian Amazon in protecting around 70,000 hectares of rainforest from deforestation. As custodians of this land, these local communities have kept almost 27 million trees standing which absorb and store over 38 million tonnes of CO₂ from the earth's atmosphere.



Protect

69,810

Hectares
of rainforest



Keep

26,807,633

Trees
standing



Store

38,415,672

Tonnes of
carbon stores



Figures correct as of April 2023

Print more,
save more with
our high yield
toners and value
packs



The benefits of high yield

High yield toner cartridge savings

The TN248XL cartridges contain more toner for a higher page yield and lower cost per page. For those with high volume print needs, they also save you time by reducing the frequency of cartridge changes.

Value pack savings

Save money on your toner with a multipack. The TN248VAL value pack is more economical and convenient than single pack purchases, reducing the cost per page.



Brother Mobile Connect

Print from anywhere by downloading the Brother Mobile Connect app.

With Brother Mobile Connect, you can fully operate your Brother printer from your fingertips. Print and scan* documents on the move and order genuine Brother supplies straight to your door. You can also personalise your frequently used features and unlock a revolutionary way of printing from your mobile device.

Download the app on your mobile device to get started

**Multifunction devices only*



**DOWNLOAD
FOR FREE**



App features



Effortless print and scan experience



Send a print job, any time, any place



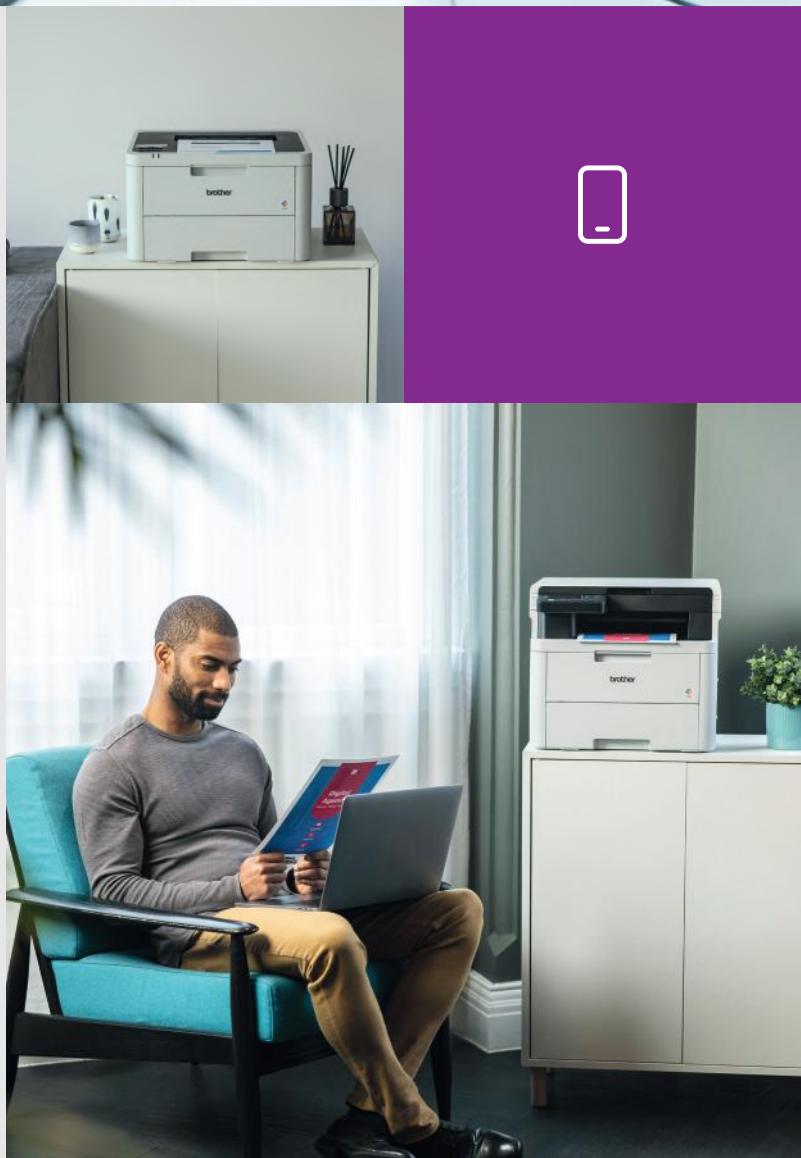
No more lost scanned files



Customisable interface



Replenish toner cartridges, quickly and easily

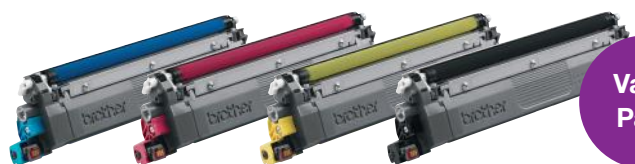


Original Brother supplies and accessories



TN248

1,000 page toners (BK,C,M,Y)

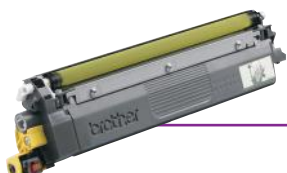


**Value
Pack**



TN248VAL

1,000 page toners (BK,C,M,Y)



TN248XL

3,000 page toner (BK)
2,300 page toners (C,M,Y)



WT229CL

Waste toner box



DR248CL

Drum unit



BU229CL

Belt unit

Perfect results

Have guaranteed results every time, with Brother's genuine supplies. Your documents are important, and you do not want to run the risk of poor quality. By using Brother genuine toner, you can print crisp, sharp documents, that stand the test of time.





HL-L3240CDW
HL-L3220CWE
HL-L3215CW
HL-L3220CW

Specification and features

- 8 Approx. declared yield value in accordance with ISO/IEC 19798
- 11 Capacity calculated with 80gsm paper
- 17 Optional download
- 19 Requires additional activation

This range is compatible with Brother's EcoPro toner subscription

<div><div></div><div></div><div></div><div></div></div>	<div>General</div>		
	<div>1 line LCD</div> <div>256MB memory</div>		
<div><div></div><div></div><div></div><div></div></div>	<div>Print</div>		
	<div>1-sided print speed: 18ppm mono/colour (up to 600 x 600dpi resolution)</div>		
	<div>1-sided print speed: 26ppm mono/colour (up to 600 x 600dpi resolution)</div>		
	<div>2-sided print speed: 10 sides per minute mono/colour (5 sheets per minute)</div>		
	<div>First print out time: less than 13.5 seconds (mono/colour)</div>		
	<div>First print out time: less than 15 seconds (mono/colour)</div>		
<div><div></div><div></div><div></div><div></div></div>	<div>PCL5e, PCL5c, PCL6 (PCL XL Class3.0), BR-Script3, PDF Version 1.7</div>		
	<div>Up to 3,000 pages recommended monthly print volume</div>		
	<div>Connectivity¹⁷</div>		
<div><div></div><div></div><div></div><div></div></div>	<div>High speed USB 2.0</div>		
	<div>Gigabit ethernet (10Base-T/100Base-TX/1000Base-T)</div>		
	<div>Wireless 2.4 and 5GHz (IEEE 802.11a/b/g/n) with Wi-Fi Direct®</div>		
	<div>Mobile printing - Mobile Connect, Brother Print Service Plugin, AirPrint, Mopria</div>		
<div><div></div><div></div><div></div><div></div></div>	<div>Paper handling¹¹</div>		
	<div>Standard input tray: 250 sheets</div>		
	<div>Manual feed slot: 1 sheet</div>		
	<div>Output tray: 150 sheets</div>		
	<div>Media weights: standard tray - 60 to 163gsm, manual feed slot - 60 to 163gsm</div>		
<div><div></div><div></div><div></div><div></div></div>	<div>Duplex 60 to 105gsm</div>		
	<div>Supplies and consumables⁸</div>		
<div><div></div><div></div><div></div><div></div></div>	<div>500 page in-box toner</div>		
	<div>1,000 page in-box toner</div>		
	<div>TN248 (1,000 pages BK,C,M,Y), TN248XL (3,000 pages BK, 2,300 pages CMY)</div>		
	<div>Drum unit (DR248CL): approx 20,000 at 1 page per job, belt unit (BU229CL): approx. 50,000 at 2 pages per job waste toner box (WT229CL): approx. 50,000 at 5 pages per job</div>		

DCP-L3555CDW
DCP-L3560CDW
DCP-L3527CDW
DCP-L3520CDWE
DCP-L3515CDW
DCP-L3520CDW

Specification and features

- 3 Scan speeds based on ISO/IEC 17991
- 8 Approx. declared yield value in accordance with ISO/IEC 19798
- 11 Capacity calculated with 80gsm paper
- 17 Optional download
- 19 Requires additional activation

This range is compatible with Brother's EcoPro toner subscription

General

2 line LCD
8.8cm colour touchscreen
512MB memory

Print

1-sided print speed: 18ppm mono/colour (up to 600 x 600dpi resolution)
1-sided print speed: 26ppm mono/colour (up to 600 x 600dpi resolution)
2-sided print speed: 7 sides per minute mono/colour (3 sheets per minute)
2-sided print speed: 10 sides per minute mono/colour (5 sheets per minute)
First print out time: less than 15 seconds (mono/colour)
First print out time: less than 13.5 seconds (mono/colour)
PCL5e, PCL5c, PCL6 (PCL XL Class3.0), BR-Script3, PDF Version 1.7
Up to 3,000 pages recommended monthly print volume

Scan³

1-sided scan speed: 27ipm mono / 21ipm colour
Scan resolution from ADF: up to 600 x 600dpi
Scan resolution from scanner glass: up to 1200 x 1200dpi (mono/colour)
Scan to email, image, OCR, file, FTP, network folder (Windows only), SharePoint

Copy

1-sided copy speed: 18cpm (mono/colour)
1-sided copy speed: 26cpm (mono/colour)
Copy resolution: up to 600 x 600dpi

Connectivity¹⁷

High speed USB 2.0
Gigabit ethernet (10Base-T/100Base-TX/1000Base-T)
Wireless 2.4 and 5GHz (IEEE 802.11a/b/g/n) with Wi-Fi Direct®
Mobile printing - Mobile Connect, Brother Print Service Plugin, AirPrint, Mopria
Web Connect (Connect with 3rd party services)
Brother Apps (Brother original services)

Paper handling¹¹

Standard input tray: 250 sheets
Manual feed slot: 1 sheet
ADF: 50 sheets
Output tray: 150 sheets
Media weights: standard tray: 60 to 163gsm, manual feed slot - 60 to 163gsm, duplex 60 to 105gsm
Media weights: ADF: 64 to 105gsm

Supplies and consumables⁸

500 page in-box toner
1,000 page in-box toner
TN248 (1,000 pages black and colour), TN248XL (3,000 pages black, 2,300 pages colour)
Drum unit (DR248CL): approx 20,000 at 1 page per job, belt unit (BU229CL): approx. 50,000 at 2 pages per job
waste toner box (WT229CL): approx. 50,000 at 5 pages per job

Specification and features

- 3 Scan speeds based on ISO/IEC 17991
- 8 Approx. declared yield value in accordance with ISO/IEC 19798
- 11 Capacity calculated with 80gsm paper
- 17 Optional download
- 19 Requires additional activation

This range is compatible with Brother's EcoPro toner subscription

General

8.8cm colour touchscreen

512MB memory

Print

1-sided print speed: 18ppm mono/colour (up to 600 x 600dpi resolution)

1-sided print speed :26ppm mono/colour (up to 600 x 600dpi resolution)

2-sided print speed: 7 sides per minute mono/colour (3 sheets per minute)

2-sided print speed: 10 sides per minute mono/colour (5 sheets per minute)

First print out time: less than 15 seconds (mono/colour)

First print out time: less than 13.5 seconds (mono/colour)

PCL5e, PCL5c, PCL6 (PCL XL Class3.0), BR-Script3, PDF Version 1.7

Up to 3,000 pages recommended monthly print volume

Scan³

1-sided scan speed: 27ipm mono/21ipm colour

Scan resolution from ADF: up to 600 x 600dpi

Scan resolution from scanner glass: up to 1200 x 1200dpi (mono/colour)

Scan to email, image, OCR, file, FTP, network folder (Windows only), SharePoint

Scan to USB

Copy

1-sided copy speed: 18cpm (mono/colour)

1-sided copy speed: 26cpm (mono/colour)

Copy resolution: up to 600 x 600dpi

Fax

33,600bps Super G3

PC Fax send and receive

Up to 50 manual location broadcast

Up to 350 location broadcast

Display FAX/receive

Connectivity¹⁷

High speed USB 2.0

USB host (front)

Gigabit ethernet (10Base-T/100Base-TX/1000Base-T)

Wireless 2.4 and 5GHz (IEEE 802.11a/b/g/n) with Wi-Fi Direct®

Mobile printing - Mobile Connect, Brother Print Service Plugin, AirPrint, Mopria

Web Connect (Connect with 3rd party services)

Brother Apps (Brother original services)

Paper handling¹¹

Standard input tray: 250 sheets

Manual feed slot: 1 sheet

ADF: 50 sheets

Output tray: 150 sheets

Media weights: standard tray 60 to 163gsm, manual feed slot - 60 to 163gsm, duplex 60 to 105gsm, ADF: 64 to 105gsm

Supplies and consumables⁸

500 page in-box toner

1,000 page in-box toner

TN248 (1,000 pages black and colour), TN248XL (3,000 pages black, 2,300 pages colour)

Drum unit (DR248CL): approx 20,000 at 1 page per job, belt unit (BU229CL): approx. 50,000 at 2 pages per job
waste toner box (WT229CL): approx. 50,000 at 5 pages per job

brother

at your side

Contact:

www.brother.co.uk



Compatible with Brother's
EcoPro toner subscription

Brother UK Limited

Shepley Street, Audenshaw
Manchester M34 5JD
Tel: +44 (0) 333 777 4444