



**Power your
business with
the latest in
mono laser print
technology.**

www.brother.co.uk

**Professional
reliable
mono laser
printers just
got better.**





Our most advanced mono laser technology is guaranteed to deliver quality printing every time.

Designed to deliver professional performance, with high-speed, high-quality printing you can rely on. Our latest mono laser printer range comes with up-to-date industry-standard security features and the flexibility to tailor the device to suit you and your business.



Performance engineered

With its high-speed, premium-quality printing and outstanding durability, you can be confident that your device will keep on performing to the highest standard - giving you and your business the best results, time after time.



Super-fast printing

Print large volumes of documents quickly. Printing up to 50 pages per minute (ppm) and a first print out time (FPOT) of less than 6.7 seconds, you will never have a long wait for your documents to be printed.



Enterprise level scanning

With 2-sided scanning speeds of up to 100 images per minute (ipm), physical documents are easily transformed into digital files with precision, clarity and speed.



User-friendly

Make the most of your office space with this highly productive device. Ideal for high-volume users, this intelligent device is designed to deliver a user-friendly, professional experience with exceptional printing that your business can depend on.



Secure by design

To keep pace with the ever-evolving legislation on privacy and data security, our devices offer the latest industry-standard security features to securely protect your data.

All Brother products are secure as standard - using triple-layer security at a network, device and document level, with a range of robust features that means data is only ever seen by those it is meant for.

With businesses shifting towards zero trust environments, we know that security is your highest priority. The evolving nature of security means that our security experts continuously research new enhancements to products, solutions and services to proactively ensure all our products are secure by design.

Our professional mono laser range provides business level security verified through external security certification, offering added peace of mind that your documents remain safe and secure. All devices come with a flexible suite of security features and solutions that can be tailored to your business, allowing you to easily audit, control and manage your fleet of devices securely.



All devices come with a flexible suite of security features and solutions that can be tailored to your business



Your device protects your business by reducing its attack surface by:

Restricting user access

by using LDAP, Windows Active Directory together with NFC authentication, only authorised users are able to access the device.

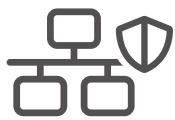
Restricting privileges at a device level

with Secure Function Lock and Setting Lock, only authorised users are permitted access to specific functions.

Maintaining device integrity

with runtime intrusion detection, Secure Boot, digitally signed firmware and end-to-end encrypted connections, devices are always performing at their optimum level of security.





Your network is protected with flexible industry standard features and management tools including:

Intrusion protection - with protocol management, interface restrictions and IPV4 filtering, you have the flexibility to adapt device settings to your business.

Secure connection - securely connect to enterprise level wired and wireless networks through industry standard IEEE 802.1X.

Secure encrypted communication - by using flexible industry standards such as TLS, SSH, IPSEC, HTTPS and SNMP3, your business can tailor the device to its network.

Easily manage and configure your security profile - using Device Master Settings, BRAdmin Pro 4 and Mass Deployment Tool, your business can apply settings to entire fleets of devices.

Audit your devices - using SIEM integration through Syslog, you can gather real time usage information on your devices.



Your documents are protected through encryption, storage protection and secure print solutions including:

Encrypted document transfer - when you send your print data from your computer to the device, IPPS/HTTPS encryption ensures your data is secure and unreadable.

Secure scan data transfer - whether you are scanning to your local network or over the internet via Web Connect or a cloud-based service, your data is protected using TLS, HTTPS, SFTP (SSH).

Non-persistent internal memory - all print job data is automatically wiped during a reboot and data is purged, ensuring no information is left on the device.

Secure print release - using a Brother secure print solution, documents are only released when you are ready to print and collect them.

3rd party integration - through Brother Solutions Interface (BSI), our devices can be fully integrated with trusted 3rd party partners such as Kofax and YSoft, which adds an extra layer of security to your business.



Solutions ready

Automate workflows and improve business processes and security with print management solutions.

Brother offers a suite of document management, security and workflow solutions which can be added to devices. These provide additional professional features to improve your business processes.

**Complete
flexibility in how
you manage,
secure and control
your documents.**



Unlock new possibilities



Workflow solutions

Personalised touchscreen

Improve efficiency by making frequently used functions more accessible by showing and hiding specific shortcuts. Simply log in to the device and have your individual user based shortcuts on the home screen.

Barcode printing

With Barcode Print+, simply supply your printer with the information for the barcode. The printed 2D and 3D barcode is easily read by a variety of barcode readers and scanners.

Automatically route documents

Reduce the labour-intensive task of scanning several documents, saving and renaming them. Barcode Utility means that documents with a barcode can be scanned and automatically saved to the required location, automating the separation of a batch of documents and routing each individual file to the designated folder on your network.



Security solutions

Secure Print Release

Secure Print+ enables you to print your confidential business documents securely. Your sensitive documents are only printed when you are ready to collect them from the printer. Only authorised staff can collect their documents and users are easily added and removed.





Device management

Remote support

Remote Panel operates in real-time, offering a complete interactive interface to your printing device. Your IT provider can access the full functionality of your printer, to quickly diagnose and resolve any issues and enable settings to be changed as if they were physically standing at the printer.

Automatic diagnostics

Request Help is a Brother service that enables your IT administrator or service provider to easily troubleshoot errors that may occur. You simply press the 'Request Help' icon on the control panel and a full diagnostic report is created and automatically emailed to your IT administrator.

Order supplies from your printer

Effortlessly order your toner cartridge supplies directly from your printing device, with the Order Supplies service. In one touch, your selected supplier will be notified when you require replacement supplies and arrange delivery, ensuring you never run out of toner when you need it.

KOFAX 

YSOFT

PaperCutMF 

You can also upgrade your devices with 3rd party solutions including integration with industry leading providers Kofax and YSoft - giving you complete flexibility in how you manage, secure and control your documents.

Brother solutions do not come as standard on all devices. For more information on how to access these solutions please contact your local dealer.



Brother managed print services (MPS) makes printing simple for businesses.

Available as part of a MPS contract, each device in the range has been designed with MPS in mind.

We recognise what matters to you day-to-day. So, whatever your printing needs, we'll be "At your side" to find the solution that simplifies printer admin, saves time, keeps costs down, and helps you stay productive:

- **Automatic ink and toner ordering and delivery**
Ink and toner will always arrive before you run out, so there's one less thing to think about.
- **Reduced ongoing costs**
It's the cheapest way to get genuine supplies and get complete cost transparency.
- **A fast breakdown service**
Remote support within four business hours and next business day repairs for the life of your printer.
- **Remanufacturing and recycling of used supplies**
We recycle your printer cartridges when you're done, so your used supplies won't end up in landfill and can go on to be used again and again.
- **Flexible services that change with your business**
Cancel or amend your service at any time to suit your business.
- **Stay in control with the Brother MPS portal**
It's simple to monitor your print usage, request support and change your service in the Brother MPS customer portal.
- **The last printer you'll need to buy**
With a promise to repair or replace your Brother printer, and provide guaranteed genuine supplies, you should never have to buy another printer for as long as you're a Brother MPS customer. That's manufacturer-backed service for you.



Power your business
with the latest in mono
laser print technology



PRINT



SCAN



COPY



FAX



Print up to 50 ppm

2-sided print, up to 24 sides per minute (spm)

2-sided scan, up to 100ipm

17.8cm colour touchscreen

Gigabit ethernet, optional 5GHz Wi-Fi

2GB internal memory with optional secure USB storage

80 sheet 2-sided automatic document feeder (ADF)

520 sheet paper input tray, expandable to 2,600 pages

11,000 page in-box toners. Up to 25,000 page toner available

Compatible with Brother and 3rd party solutions

Comes with Barcode Print+ Secure Print+ and Dedicated UI

NFC (for secure card authentication)

MFC-L6910DN





PRINT



SCAN



COPY



FAX



5GHz
WIRELESS



Print up to 50ppm

2-sided print, up to 24spm

Scan up to 56ipm

12.7cm colour touchscreen

Gigabit ethernet, 5GHz Wi-Fi

512MB internal memory

70 sheet 2-sided ADF

520 sheet paper input tray, expandable to 1,560 pages

6,000 page in-box toners. Up to 18,000 page toners available

Compatible with Brother and 3rd party solutions

MFC-L6710DW



PRINT



SCAN



COPY



FAX



5GHz
WIRELESS



Print up to 48ppm

2-sided print, up to 24spm

2-sided scan, up to 56ipm

8.9cm colour touchscreen

Gigabit ethernet, 5GHz Wi-Fi

512MB internal memory

50 sheet 2-sided ADF

250 sheet paper input tray expandable to 1,290 pages

3,000 page in-box toners. Up to 11,000 page toners available

Compatible with Brother and 3rd party solutions

MFC-L5710DW



PRINT



SCAN



COPY



FAX



Print up to 48ppm

2-sided print, up to 24spm

2-sided scan, up to 56ipm

8.9cm colour touchscreen

Gigabit ethernet

512MB internal memory

50 sheet 2-sided ADF

250 sheet paper input tray expandable to 1,290 pages

3,000 page in-box toners. Up to 11,000 page toners available

Compatible with Brother and 3rd party solutions

MFC-L5710DN



PRINT



SCAN



COPY

5GHz
WIRELESS

Print up to 48ppm

2-sided print, up to 24spm

Scanning up to 28ipm

8.9cm colour touchscreen

Gigabit ethernet, 5GHz Wi-Fi

512MB internal memory

50 sheet ADF

250 sheet paper input tray, expandable to 1,290 pages

3,000 page in-box toners. Up to 11,000 page toners available

Compatible with Brother and 3rd party solutions

DCP-L5510DW



PRINT



Print up to 50ppm

2-sided print, up to 24spm

8.9cm colour touchscreen

Gigabit ethernet, optional 5GHz Wi-Fi

1GB internal memory with optional secure USB storage

520 sheet paper input tray, expandable to 2,600 pages

11,000 page in-box toners. Up to 25,000 page toners available

Compatible with Brother and 3rd party solutions

Comes with Barcode Print+, Secure Print+

NFC (for secure card authentication)

HL-L6410DN



PRINT

5GHz
WIRELESS

Print up to 50ppm

2-sided print, up to 24spm

Gigabit ethernet, 5GHz Wi-Fi

256MB internal memory

520 sheet paper input tray, expandable to 1,560 pages

6,000 page yield toners. Up to 18,000 toners available

Compatible with Brother Solutions

HL-L6210DW



- Print up to 48ppm
- 2-sided print, up to 24 sides per minute
- Gigabit ethernet, 5GHz Wi-Fi
- 256MB internal memory
- 250 sheet paper input tray, expandable to 1,290 pages
- 3,000 page in-box toners. Up to 11,000 page toners available
- Compatible with Brother Solutions

HL-L5210DW



- Print up to 48ppm
- 2-sided print, up to 24spm
- Gigabit ethernet
- 256MB internal memory
- 250 sheet paper input tray, expandable to 1,290 pages
- 3,000 page in-box toners. Up to 11,000 page toners available
- Compatible with Brother Solutions

HL-L5210DN





Accessories

Configure the device to suit your office needs



Flexible and efficient

This professional mono laser range has been designed to seamlessly fit into your office space, whilst meeting the specific print requirements of your business.

Whether you need a mailbox to sort your printed documents or a staple finisher to automatically staple them together, your printer can be easily transformed to help improve business productivity.

Available for all models, optional paper trays are easily added, transforming your desktop device into a floor-standing printer, giving you the flexibility to increase the amount your business can print from the one device.





Genuine Brother accessories



Brother Genuine Supplies are made with you in mind. Not only to guarantee you effortless performance, and save you money in the long run, but also to protect your printer from potential long-term damage.



TN3600

3,000 page toner



TN3600XL

6,000 page toner



TN3600XXL

11,000 page toner



TN3610

18,000 page toner



TN3610XL

25,000 page toner



NC-9110W

Wi-Fi module



TT-4000

4 X 520 sheet tower tray



ZUNTL6000W

Cabinet



LT-5505

250 sheet tray



LT-6505

520 sheet tray



DR3600

Drum unit



SF-4000

Staple finisher



SR100

Staple cartridge



MX-4000

Mailbox



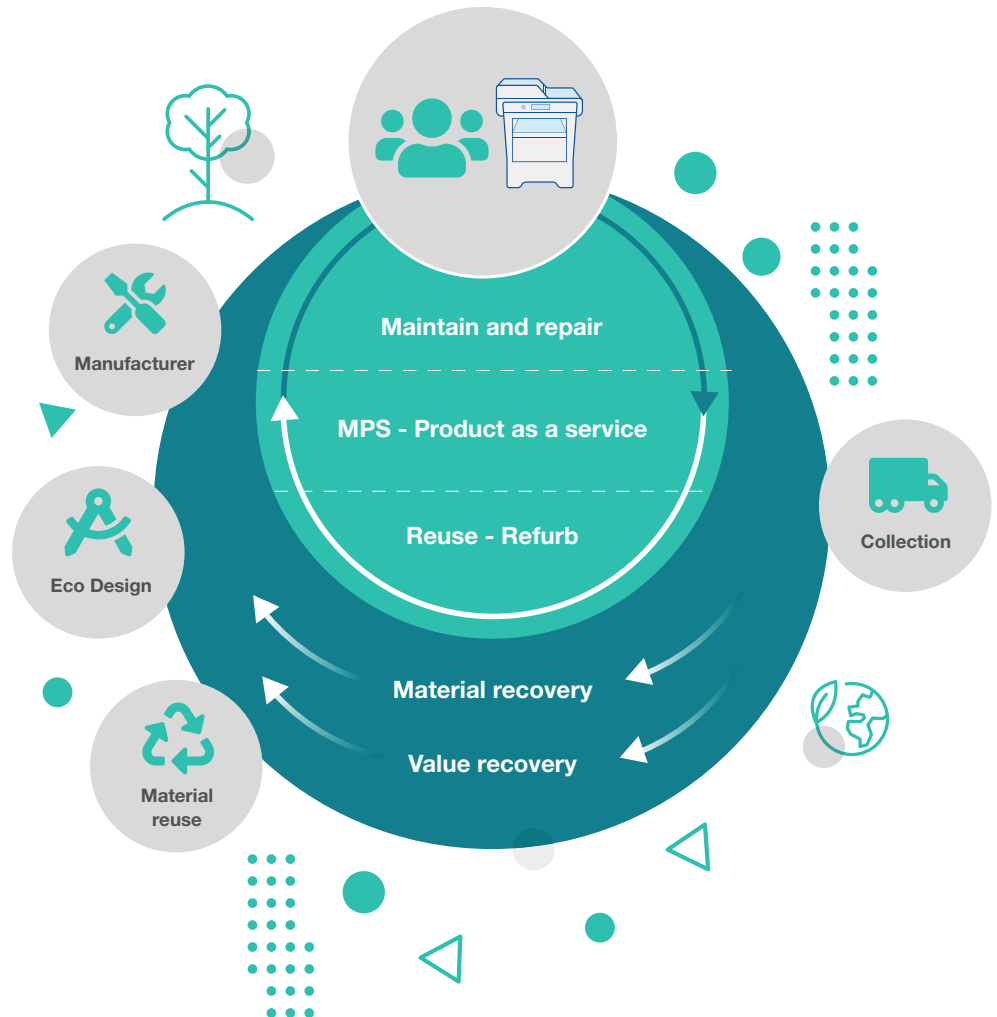
Dedicated to remanufacturing and reducing CO2

Our processes mean that 100% of the Brother cartridges you send back to us are remanufactured or recycled. Absolutely nothing goes to landfill and hasn't since 2013.

We are regularly investing in more sustainable products by working towards the circular economy principles of reduce, reuse, refurbish, repair and recycle with zero waste to landfill.

Dedicated carbon neutral remanufacturing facilities support our free toner cartridge return and recycle scheme. Every year, we remanufacture or recycle 3 million toner cartridges.

By remanufacturing 86% of our cartridges and each cartridge saving on average 2.05kg of CO2, we save around 5,300 tonnes of CO2 each year. In doing this, we are able to support your company in reducing its carbon footprint and can provide you with an annual certificate showing the amount of CO2 you have saved when returning cartridges via the bulk returns scheme.



Zero waste to landfill

Our European recycling facilities have been zero waste to landfill accredited since 2013 - stopping 1,500 tonnes of material from ending up in landfill every year.





Our commitment to local communities

Our Vietnam manufacturing facilities received Responsible Business Alliance (RBA) Gold certification, for our commitment to fulfilling our social responsibilities through the establishment of sustainable supply chains.

RBA's code of conduct sets out standards to ensure that working conditions are safe, that workers are treated with respect and dignity, and that business operations are conducted environmentally responsibly and ethically.



Responsible Business Alliance

Affiliate Member

COOL EARTH

As well as our market-leading, carbon-neutral toner remanufacturing program, we have been partners with global charity, Cool Earth for well over a decade. A UK-based non-profit organisation, Cool Earth helps protect endangered rainforest, combats against climate change and provides employment for local people.

Together, we have supported 7 communities across Papua New Guinea and the Peruvian Amazon in protecting around 70,000 hectares of rainforest from deforestation. As custodians of this land, these local communities have kept almost 27 million trees standing which absorb and store over 38 million tonnes of CO2 from the earth's atmosphere.



Protect

69,810

Hectares
of rainforest



Keep

26,807,633

Trees
standing



Store

38,415,672

Tonnes of
carbon stores



Figures correct as of April 2023

Specification and features

HL-L5210DN
HL-L5210DW
HL-L6210DW
HL-L6410DN

General

- 1 line LCD
- 8.9cm colour touchscreen
- 256MB memory
- 1GB memory

Print

- 1-sided print speed: 48ppm mono (up to 1200 x 1200dpi resolution)
- 1-sided print speed: 50ppm mono (up to 1200 x 1200dpi resolution)
- 2-sided print speed: 24spm mono (12 sheets per minute)
- FPOT: less than 6.7 seconds (mono)
- PCL6, BR-Script3, IBM Proprinter XL, Epson FX-850, PDF Version 1.7, XPS Version 1.0
- Up to 5,000 pages recommended monthly print volume
- Up to 8,000 pages recommended monthly print volume
- Up to 16,000 pages recommended monthly print volume

Connectivity¹⁷

- High speed USB 2.0
- USB host (rear) encrypted storage (required to be prepared by user)
- Gigabit ethernet (10Base-T/100Base-TX/1000Base-T)
- Wireless 2.4 and 5GHz (IEEE 802.11a/b/g/n) with WiFi Direct®
- Optional wireless 2.4 and 5GHz (IEEE 802.11a/b/g/n) with WiFi Direct®
- Mobile printing: Mobile Connect, Brother Print Service Plugin, AirPrint, Alexa Print, Mopria
- Web Connect (connect with 3rd party services)
- NFC for secure authentication and NFC shortcut

Paper handling¹¹

- Standard input tray: 250 sheets
- Standard input tray: 520 sheets
- Multi-purpose tray: 100 sheets
- Output tray: 150 sheets
- Output tray: 250 sheets (with stack full sensor)
- Media weights: standard tray 60 to 163gsm, multi-purpose tray 60 to 230gsm, optional tray 60 to 120gsm, duplex 60 to 105gsm
- Optional stapler finisher (offset stacker stapler) 500 sheets face down, optional mailbox 400 sheets

HL-L6410DN
HL-L6210DW
HL-L5210DW
HL-L5210DN

Supplies and consumables ⁷			
<div><div></div><div></div><div></div></div>	<div><div></div><div></div><div></div></div>	<div><div></div><div></div><div></div></div>	<div><div></div><div></div></div> Supplied with TN3600 toner
			<div><div></div><div></div></div> Supplied with TN3600XL toner
			<div><div></div><div></div></div> Supplied with TN3600XXL toner
			<div><div></div><div></div></div> TN3600 (3,000 pages), TN3600XL (6,000 pages), TN3600XXL (11,000 Pages)
			<div><div></div><div></div></div> TN3610 (18,000 pages)
<div><div></div><div></div><div></div></div>	<div><div></div><div></div><div></div></div>	<div><div></div><div></div><div></div></div>	<div><div></div><div></div></div> TN3610XL (25,000 pages)
			<div><div></div><div></div></div> DR3600 drum unit 75,000 pages at 3 pages per job (approx...)
Optional accessories ¹¹			
<div><div></div><div></div><div></div></div>	<div><div></div><div></div><div></div></div>	<div><div></div><div></div><div></div></div>	<div><div></div><div></div></div> 250 sheet tray (LT-5505) up to 2
			<div><div></div><div></div></div> 250 sheet tray (LT-5505) up to 3
			<div><div></div><div></div></div> 520 sheet tray (LT-6505) up to 2
			<div><div></div><div></div></div> 4 x 520 sheet tower tray (TT-4000)
			<div><div></div><div></div></div> Wi-Fi module (NC-9110W)
<div><div></div><div></div><div></div></div>	<div><div></div><div></div><div></div></div>	<div><div></div><div></div><div></div></div>	<div><div></div><div></div></div> External NFC card reader holder (CH-1000)
Solutions, upgrades and compatibility ¹⁹			
<div><div></div><div></div><div></div></div>	<div><div></div><div></div><div></div></div>	<div><div></div><div></div><div></div></div>	<div><div></div><div></div></div> Barcode Print+, Brother ThinPrint Client, Email Print
			<div><div></div><div></div></div> Order Supplies, Remote Panel, Request Help, ThinPrint Client, SecurePrint Advanced, SecurePrint+
			<div><div></div><div></div></div> Comes with Barcode Print+, SecurePrint+
			<div><div></div><div></div></div> 3rd Party Solutions compatible through Brother Solutions Interface (BSI) including Kofax ControlSuite, YSoft and more

Specification and features

DCP-L5510DW
MFC-L5710DN
MFC-L5710DW
MFC-L6710DW
MFC-L6910DN

General					
●	●	●	●	●	8.9cm colour touchscreen
●	●	●	●	●	12.7cm colour touchscreen
●	●	●	●	●	17.8cm colour touchscreen
●	●	●	●	●	512MB memory
●	●	●	●	●	2GB memory
Print					
●	●	●	●	●	1-sided print speed: 48ppm mono (up to 1200 x 1200dpi resolution)
●	●	●	●	●	1-sided print speed: 50ppm mono (up to 1200 x 1200dpi resolution)
●	●	●	●	●	2-sided print speed: 24spm mono (12 sheets per minute)
●	●	●	●	●	FPOT: less than 6.7 seconds (mono)
●	●	●	●	●	PCL6, BR-Script3, IBM Proprinter XL, Epson FX-850, PDF Version 1.7, XPS Version 1.0
●	●	●	●	●	Up to 5,000 pages recommended monthly print volume
●	●	●	●	●	Up to 8,000 pages recommended monthly print volume
●	●	●	●	●	Up to 16,000 pages recommended monthly print volume
Scan ^{3, 17}					
●	●	●	●	●	1-sided scan speed: 28ipm mono/20ipm colour
●	●	●	●	●	1-sided scan speed: 50ipm mono/30ipm colour
●	●	●	●	●	2-sided scan speed: 56ipm mono/40ipm colour
●	●	●	●	●	2-sided scan speed: 100ipm mono/60ipm colour
●	●	●	●	●	Scan resolution from ADF: Up to 600 x 600dpi
●	●	●	●	●	Scan resolution from scanner glass: Up to 1200 x 1200dpi mono/colour
●	●	●	●	●	Scan to e-mail, image, OCR, File, USB, FTP, SFTP, network folder (Windows only), e-mail server, SharePoint
Copy					
●	●	●	●	●	1-sided copy speed: 48ppm mono
●	●	●	●	●	1-sided copy speed: 50ppm mono
●	●	●	●	●	Copy resolution (up to 1200 x 600dpi)
●	●	●	●	●	Automatic 2-sided copy
Fax					
●	●	●	●	●	33,600 bps Super G3
●	●	●	●	●	PC fax send and receive
●	●	●	●	●	Up to 50 location broadcast
Connectivity ¹⁷					
●	●	●	●	●	High speed USB 2.0
●	●	●	●	●	USB host (front) direct print / scan
●	●	●	●	●	USB host (rear) encrypted storage (required to be prepared by user)
●	●	●	●	●	Gigabit ethernet (10Base-T/100Base-TX/1000Base-T)
●	●	●	●	●	Wireless 2.4 and 5GHz (IEEE 802.11a/b/g/n) with WiFi Direct [®]
●	●	●	●	●	Optional wireless 2.4 and 5GHz (IEEE 802.11a/b/g/n) with WiFi Direct [®]
●	●	●	●	●	Mobile printing: Mobile Connect, Brother Print Service Plugin, AirPrint, Alexa Print, Mopria
●	●	●	●	●	Web connect (connect with 3rd party services)
●	●	●	●	●	Brother apps (Brother original services)
●	●	●	●	●	NFC for secure authentication and NFC shortcut

Continued on the next page

Specification and features

DCP-L5510DW
MFC-L5710DN
MFC-L5710DW
MFC-L6710DW
MFC-L6910DN

●	●	●	●	●
●	●	●	●	●
●	●	●	●	●
●	●	●	●	●
●	●	●	●	●
●	●	●	●	●
●	●	●	●	●

Paper handling¹¹

Standard input tray: 250 sheets

Standard Input tray: 520 sheets

Multi-purpose tray: 100 sheets

ADF: 50 sheets

ADF: 70 sheets

ADF: 80 sheets

Output tray 150 sheets

Output tray 250 sheets (with stack full sensor)

Media weights: Standard tray 60 to 163gsm, multi-purpose tray 60 to 230gsm, ADF 64 to 90gsm, optional tray 60 to 120gsm, duplex 60 to 105gsm

Supplies and consumables⁷

●	●	●	●	●
●	●	●	●	●
●	●	●	●	●
●	●	●	●	●
●	●	●	●	●
●	●	●	●	●
●	●	●	●	●

Supplied with TN3600 toner

Supplied with TN3600XL toner

Supplied with TN3600XXL toner

TN3600 (3,000 pages), TN3600XL (6,000 pages), TN3600XXL (11,000 pages)

TN3610 (18,000 pages)

TN3610XL (25,000 pages)

DR3600 drum unit (approx. 75,000 pages at 3 pages per job)

Optional accessories¹¹

●	●	●	●	●
●	●	●	●	●
●	●	●	●	●
●	●	●	●	●
●	●	●	●	●
●	●	●	●	●
●	●	●	●	●

250 sheet tray (LT-5505) up to 2

520 sheet tray (LT-6505) up to 2

4 x 520 sheet tower tray (TT-4000)

Wi-Fi module (NC-9110W)

External NFC card reader holder (CH-1000)

Solutions, upgrades and compatibility¹⁹

●	●	●	●	●
●	●	●	●	●
●	●	●	●	●
●	●	●	●	●
●	●	●	●	●
●	●	●	●	●
●	●	●	●	●

Order Supplies, Remote Panel, Request Help, ThinPrint Client, SecurePrint+ Barcode Print+ , Email Print, Barcode Utility, Custom UI

Comes with Barcode Print+, SecurePrint+

Dedicated UI

3rd Party Solutions compatible through Brother Solutions Interface (BSI) including Kofax ControlSuite, YSoft and more

³ Scan speeds based on ISO/IEC 17991

⁷ Approx. declared yield value in accordance with ISO/IEC 19752

¹¹ Capacity calculated with 80gsm paper

¹⁷ Optional download

¹⁹ Requires additional activation

brother

at your side

Contact:

www.brother.co.uk

Brother UK Ltd

Shepley Street, Audenshaw,
Manchester M34 5JD

Tel: +44(0)161 330 6531

Fax: +44(0)161 330 5520

All specifications correct at the time of printing and are subject to change. Brother is a registered trademark of Brother Industries Ltd.
Brand product names are registered trademarks or trademarks of their respective companies.