



**Experience  
efficient mono  
laser printing**

[www.brother.co.uk](http://www.brother.co.uk)



Easy to set up  
and connect  
with fast flawless  
printing



## Boosting your printing efficiency

Brother's outstanding range of mono laser printers designed for home and small offices, come equipped with a variety of time-saving features that allows you to improve your output, leaving you with more time to focus on other tasks. Get setup with ease and download the Brother Mobile Connect app, enabling you to print and scan\* documents on the move.

*\*Multifunction devices only*





# The perfect partner for your small office

The office and home environment is continuously changing, with an increase in the demand to multi-task and improve efficiencies. Being confident that you have a printer you can rely on, easily connect to, while printing flawlessly and quickly is key.

## Work smarter

Expertly designed to increase efficiency, with fast print speeds helping you to work smarter. The 2-sided print, automatic document feeder (ADF) and high capacity input and output tray features save you time, allowing you to get on with other tasks.

## Effortless

Make your day easier and your printing effortless, with simple set up and fast ethernet, 5GHz Wi-Fi or USB connection. These efficient mono laser printers are a breeze to operate. The flagship printers have an easy to navigate touchscreen, while other models benefit from an LCD control panel.

## Print longer

These efficient mono laser printers keep your printing costs down using a separate drum and toner unit, and the generous in-box toner support your higher print volume needs. Toners are easy to change and a high yield replacement toner (printing up to 3,000 pages) is available, reducing the frequency to replace.

## Secure by design

To keep pace with the ever-evolving legislation on privacy and data security, our devices offer the latest industry-standard security features to securely protect your data. Our security experts continuously research new enhancements to products, solutions and services to proactively ensure all our products are 'secure by design'. Brother uses triple-layer security at a device, network and document level. This offers added peace of mind and guarantees that the integrity of your data is maintained at every step.



## Your efficient mono laser printer range with fast and flawless print



PRINT



SCAN



COPY



FAX



5GHz WIRELESS



- Print up to 34 pages per minute
- 2-sided print, up to 16 sides per minute
- Scan up to 22.5 images per minute
- 6.8cm colour touchscreen
- Fast ethernet, 5GHz Wi-Fi and USB
- 256MB internal memory
- 50 sheet ADF
- 250 sheet paper input tray
- Supplied with 1,200 page yield toner, 3,000 maximum yield available

MFC-L2860DW







Print up to 32 pages per minute  
2-sided print, up to 16 sides per minute  
Scan up to 22.5 images per minute  
2 line LCD control panel  
Fast ethernet, 5GHz Wi-Fi and USB  
128MB internal memory  
50 sheet ADF  
250 sheet paper input tray

**MFC-L2800DW / MFC-L2827DW:** Supplied with 700 page yield toner, 3,000 maximum yield available  
**MFC-L2835DW:** Supplied with 1,200 page yield toner, 3,000 maximum yield available

**MFC-L2800DW /  
MFC-L2827DW / MFC-L2835DW**



Print up to 32 pages per minute  
2-sided print, up to 16 sides per minute  
1 line LCD control panel  
Fast ethernet, 5GHz Wi-Fi and USB  
64MB internal memory  
250 sheet paper input tray  
Supplied with 1,200 page yield toner,  
3,000 maximum yield available

**HL-L2445DW / HL-L2447DW**



Print up to 34 pages per minute  
2-sided print, up to 16 sides per minute  
Scan up to 22.5 images per minute  
6.8cm colour touchscreen  
Fast ethernet, 5GHz Wi-Fi and USB  
256MB internal memory  
50 sheet ADF  
250 sheet paper input tray  
Supplied with 1,200 page yield toner,  
3,000 maximum yield available

**DCP-L2660DW / DCP-L2665DW**



Print up to 30 pages per minute  
2-sided print, up to 15 sides per minute  
1 line LCD control panel  
5GHz Wi-Fi and USB  
64MB internal memory  
250 sheet paper input tray  
Supplied with 700 page yield toner,  
3,000 maximum yield available

**HL-L2400DW**



Print up to 32 pages per minute  
2-sided print, up to 16 sides per minute  
2 line LCD control panel  
5GHz Wi-Fi and USB  
128MB internal memory  
250 sheet paper input tray  
Supplied with 700 page yield toner,  
3,000 maximum yield available

**DCP-L2620DW**







## The professional print bundle

All in Box print bundles are designed to help you print more without interruption

The 6,000 in-box toner prints, allow you to print high-quality documents without worrying about running out of toner.

With a three year printer guarantee you can rest assured that your printer is protected.



Print up to 32 pages per minute  
2-sided print, up to 16 sides per minute  
Scan up to 22.5 images per minute  
2 line LCD control panel  
Fast ethernet, 5GHz Wi-Fi and USB  
128MB internal memory  
50 sheet ADF  
250 sheet paper input tray  
Bundled with 2 x 3,000 page yield toners,  
3,000 maximum yield available  
Three years peace of mind guarantee



**MFC-L2827DWXL**



Print up to 32 pages per minute  
2-sided print, up to 16 sides per minute  
2 line LCD control panel  
5GHz Wi-Fi and USB  
128MB internal memory  
250 sheet paper input tray  
Bundled with 2 x 3,000 page yield toners,  
3,000 maximum yield available  
Three years peace of mind guarantee



**DCP-L2627DWXL**

\*Approx. cartridge yield is declared in accordance with ISO/IEC 19752







# The automated toner subscription for your printer

Toner delivered direct to your door when you need it

All mono laser printers within this range are compatible with EcoPro subscription plans. For the three models highlighted below EcoPro is completely free for the first four months.

For added peace of mind, when you sign up to EcoPro, your printer is covered under warranty for any fixes or repairs.



- Print up to 34 pages per minute
- 2-sided print, up to 16 sides per minute
- Scan up to 22.5 images per minute
- 6.8cm colour touchscreen
- Fast ethernet, 5GHz Wi-Fi and USB
- 256MB internal memory
- 50 sheet ADF
- 250 sheet paper input tray
- Supplied with 700 page yield toner, 3,000 maximum yield available



4 Month FREE TRIAL toner subscription

MFC-L2860DWE



- Print up to 32 pages per minute
- 2-sided print, up to 16 sides per minute
- 2 line LCD control panel
- 5GHz Wi-Fi and USB
- 128MB internal memory
- 250 sheet paper input tray
- Supplied with 700 page yield toner, 3,000 maximum yield available



4 Month FREE TRIAL toner subscription

DCP-L2627DWE



- Print up to 30 pages per minute
- 2-sided print, up to 15 sides per minute
- 1 line LCD control panel
- 5GHz Wi-Fi and USB
- 64MB internal memory
- 250 sheet paper input tray
- Supplied with 700 page yield toner, 3,000 maximum yield available



4 Month FREE TRIAL toner subscription

HL-L2400DWE

### TO FIND OUT MORE

Whether you print a little or a lot, we have a flexible printing subscription plan to suit everyone.

Download the Brother Mobile Connect app or visit the website: [brother.co.uk/ecopro](https://brother.co.uk/ecopro)





## Dedicated to remanufacturing and reducing CO2

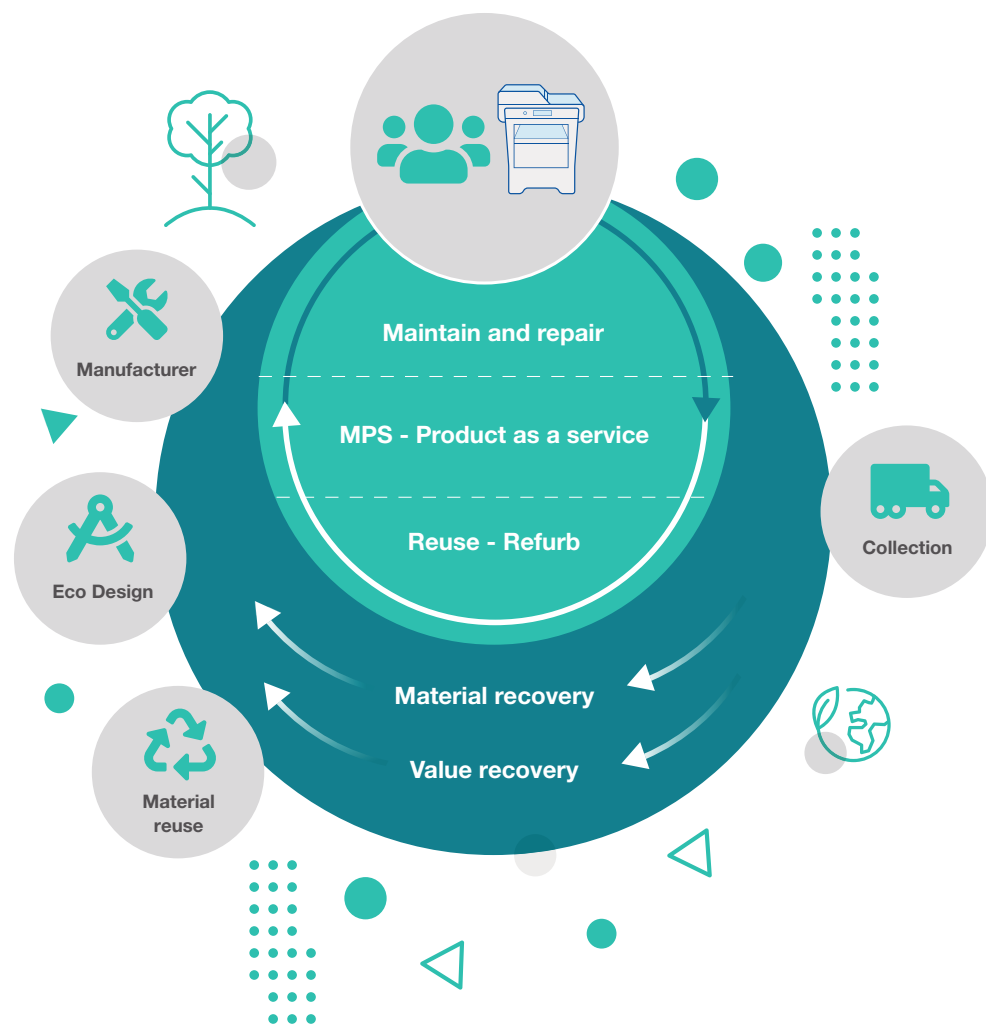
Our processes mean that 100% of the Brother cartridges you send back to us are remanufactured or recycled. Absolutely nothing goes to landfill and hasn't since 2013.

We are regularly investing in more sustainable products by working towards the circular economy principles of reduce, reuse, refurbish, repair and recycle with zero waste to landfill.

Dedicated carbon neutral remanufacturing facilities support our free toner cartridge return and recycle scheme. Every year, we remanufacture or recycle three million toner cartridges.

By remanufacturing 86% of our cartridges and each cartridge saving on average 2.05kg of CO2, we save around 5,300 tonnes of CO2 each year. In doing this, we are able to support your company in reducing its carbon footprint and can provide you with an annual certificate showing the amount of CO2 you have saved when returning cartridges via the bulk returns scheme.

\*Figures correct as of April 2022 - March 2023



## Our commitment to local communities

Our Vietnam manufacturing facilities received Responsible Business Alliance (RBA) Gold certification, for our commitment to fulfilling our social responsibilities through the establishment of sustainable supply chains.

RBA's code of conduct sets out standards to ensure that working conditions are safe, that workers are treated with respect and dignity, and that business operations are conducted environmentally responsibly and ethically.



**Responsible Business Alliance**  
Affiliate Member

## COOL EARTH

As well as our market-leading, carbon-neutral toner remanufacturing program, we have been partners with global charity, Cool Earth for well over a decade. A UK-based non-profit organization, Cool Earth helps protect endangered rainforest, combats against climate change and provides employment for local people.

Together, we have supported seven communities across Papua New Guinea and the Peruvian Amazon in protecting around 70,000 hectares of rainforest from deforestation. As custodians of this land, these local communities have kept almost 27 million trees standing which absorb and store over 38 million tonnes of CO2 from the earth's atmosphere.



## Zero waste to landfill

Our European recycling facilities have been zero waste to landfill accredited since 2013 - stopping 1,500 tonnes of material from ending up in landfill every year.



**Protect**  
69,810  
hectares  
of rainforest



**Keep**  
26,807,633  
trees  
standing



**Store**  
38,415,672  
tonnes of  
carbon stores



Figures correct as of April 2023



# Brother Mobile Connect

Print from anywhere by downloading the Brother Mobile Connect app.

With Brother Mobile Connect, you can fully operate your Brother printer from your fingertips. Print and scan\* documents on the move and order genuine Brother supplies straight to your door. You can also personalise your frequently used features and unlock a revolutionary way of printing from your mobile device.

Download the app on your mobile device to get started

*\*Multifunction devices only*



Brother Original Supplies offer peace of mind and quality guaranteed.

Brother original supplies supported across the whole range.



**TN2510**

Up to 1,200 pages<sup>7</sup>



**TN2510XL**

Up to 3,000 pages<sup>7</sup>



**DR2510**

Drum unit

## App features



Effortless print and scan experience



Send a print job, any time, any place



No more lost scanned files



Customisable interface



Replenish toner cartridges, quickly and easily



## Perfect results

Have guaranteed results every time, with Brother's genuine supplies. Your documents are important, and you do not want to run the risk of poor quality. By using Brother genuine toner, you can print crisp, sharp documents, that stand the test of time.







HL-L2447DW  
HL-L2445DW  
HL-L2400DWE  
HL-L2400DW

## Specification and features

7    Approx. declared yield value in accordance with ISO/IEC 19752  
11   Capacity calculated with 80gsm paper  
17   Optional download

This range is compatible with Brother's EcoPro toner subscription

General			
•	•	•	•
1 line LCD			
64MB memory			
Print			
•	•	•	•
1-sided print speed: 30ppm mono (up to 1200 x 1200dpi resolution)			
1-sided print speed: 32ppm mono (up to 1200 x 1200dpi resolution)			
•	•	•	•
2-sided print speed: 15 sides per minute mono (7.5 sheets per minute)			
2-sided print speed: 16 sides per minute mono (8 sheets per minute)			
•	•	•	•
First print out time: less than 8.5 seconds (mono)			
•	•	•	•
Up to 2,000 pages recommended monthly print volume			
Connectivity <sup>17</sup>			
•	•	•	•
Hi-Speed USB 2.0			
Fast ethernet (10Base-T/100Base-TX)			
•	•	•	•
Wireless 2.4 and 5GHz (IEEE 802.11a/b/g/n) with Wi-Fi Direct®			
•	•	•	•
Mobile printing - Mobile Connect, Brother Print Service Plugin, AirPrint, Alexa Print, Mopria			
Paper handling <sup>11</sup>			
•	•	•	•
Standard input tray: 250 sheets			
•	•	•	•
Manual feed slot: 1 sheet			
•	•	•	•
Output tray: 150 sheets			
•	•	•	•
Media weights: Standard tray 60 to 163gsm, manual feed slot 60 to 230gsm, duplex 60 to 105gsm			
Supplies and consumables <sup>7</sup>			
•	•	•	•
Supplied with 700 page yield toner			
Supplied with 1,200 page yield toner			
•	•	•	•
TN2510 (1,200 pages), TN2510XL (3,000 pages)			
•	•	•	•
Drum unit (DR2510): Approx 15,000 pages at 1 pages per job			



DCP-L2665DW  
DCP-L2660DW  
DCP-L2627DWXL  
DCP-L2627DWE  
DCP-L2620DW

## Specification and features

- 3 Scan speeds based on ISO/IEC 17991
- 7 Approx. declared yield value in accordance with ISO/IEC 19752
- 11 Capacity calculated with 80gsm paper
- 17 Optional download

This range is compatible with Brother's EcoPro toner subscription

General				
●	●	●	●	●
2 line LCD				
6.8cm colour touchscreen				
128MB memory				
256MB memory				
Print				
●	●	●	●	●
1-sided print speed: 32ppm mono (up to 1200 x 1200dpi resolution)				
1-sided print speed: 34ppm mono (up to 1200 x 1200dpi resolution)				
2-sided print speed: 16 sides per minute mono (8 sheets per minute)				
First print out time: less than 8.5 seconds (mono)				
PCL6, BR-Script3, PDF Version 1.7				
Up to 2,000 pages recommended monthly print volume				
Scan <sup>3, 17</sup>				
●	●	●	●	●
1-sided scan speed: 22.5ipm mono / 7.5ipm colour				
Scan resolution from ADF: Up to 600 x 600dpi				
Scan resolution from scanner glass: Up to 1200 x 1200dpi mono/colour				
Scan to email, image, OCR, file, SharePoint				
Scan to FTP, FTPS, HTTPS				
Copy				
●	●	●	●	●
1-sided copy speed: 32ppm mono				
1-sided copy speed: 34ppm mono				
Copy resolution: up to 600 x 600dpi				
Connectivity <sup>17</sup>				
●	●	●	●	●
Hi-Speed USB 2.0				
Fast ethernet (10Base-T/100Base-TX)				
Wireless 2.4 and 5GHz (IEEE 802.11a/b/g/n) with Wi-Fi Direct®				
Mobile printing - Mobile Connect, Brother Print Service Plugin, AirPrint, Alexa Print, Mopria				
Web Connect (Connect with 3rd party services)				
Brother apps (Brother original services)				
Paper handling <sup>11</sup>				
●	●	●	●	●
Standard input tray: 250 sheets				
Manual feed slot: 1 sheet				
ADF: 50 sheets				
Output tray: 120 sheets				
Media weights: Standard tray 60 to 163gsm, manual feed slot 60 to 230gsm, duplex 60 to 105gsm				
Media weights: ADF 60 to 105gsm				
Supplies and consumables <sup>7</sup>				
●	●	●	●	●
Supplied with 700 page yield toner				
Supplied with 1,200 page yield toner				
Bundled with 2 x 3,000 page yield toners				
TN2510 (1,200 pages), TN2510XL (3,000 pages)				
Drum unit (DR2510): approx 15,000 pages at 1 pages per job				

## Specification and features

- 3 Scan speeds based on ISO/IEC 17991
- 7 Approx. declared yield value in accordance with ISO/IEC 19752
- 11 Capacity calculated with 80gsm paper
- 17 Optional download

This range is compatible with Brother's EcoPro toner subscription

MFC-L2860DWE  
MFC-L2860DW  
MFC-L2833DW  
MFC-L2827DWXL  
MFC-L2827DW  
MFC-L2800DW

General				
●	●	●	●	●
2 line LCD				
6.8cm colour touchscreen				
128MB memory				
256MB memory				
Print				
●	●	●	●	●
1-sided print speed: 32ppm mono (up to 1200 x 1200dpi resolution)				
1-sided print speed: 34ppm mono (up to 1200 x 1200dpi resolution)				
2-sided print speed: 16 sides per minute mono (8 sheets per minute)				
First print out time: less than 8.5 seconds (mono)				
PCL6, BR-Script3, PDF Version 1.7				
Up to 2,000 pages recommended monthly print volume				
Scan <sup>3, 17</sup>				
●	●	●	●	●
1-sided scan speed 22.5ipm mono / 7.5ipm colour				
Scan resolution from ADF: Up to 600 x 600dpi				
Scan resolution from scanner glass: Up to 1200 x 1200dpi mono/colour				
Scan to email, image, OCR, file, email server, SharePoint				
Scan to FTP, FTPS, HTTPS				
Copy				
●	●	●	●	●
1-sided copy speed: 32ppm mono				
1-sided copy speed: 34ppm mono				
Copy resolution: Up to 600 x 600dpi				
Fax				
●	●	●	●	●
33,600bps Super G3				
PC fax send and receive				
Up to 50 location broadcast				
Display FAX/receive				
Connectivity <sup>17</sup>				
●	●	●	●	●
Hi-Speed USB 2.0				
Fast ethernet (10Base-T/100Base-TX)				
Wireless 2.4 and 5GHz (IEEE 802.11a/b/g/n) with Wi-Fi Direct®				
Mobile printing - Mobile Connect, Brother Print Service Plugin, AirPrint, Alexa Print, Mopria				
Web connect (Connect with 3rd party services)				
Brother apps (Brother original services)				
Paper handling <sup>11</sup>				
●	●	●	●	●
Standard input tray: 250 sheets				
Manual feed slot: 1 sheet				
ADF: 50 sheets				
Output tray: 120 sheets				
Media weights: Standard tray 60 to 163gsm, manual feed slot 60 to 230gsm, duplex 60 to 105gsm				
Media weights: ADF 60 to 105gsm				
Supplies and consumables <sup>7</sup>				
●	●	●	●	●
Supplied with 700 page yield toner				
Supplied with 1,200 page yield toner				
Bundled with 2 x 3,000 page yield toners				
TN2510 (1,200 pages), TN2510XL (3,000 pages)				
Drum unit (DR2510): Approx 15,000 pages at 1 pages per job				



# brother

at your side

Contact:

[www.brother.co.uk](http://www.brother.co.uk)



Compatible with Brother's  
EcoPro toner subscription

**Brother UK Ltd.**

Shepley Street, Audenshaw,  
Manchester, M34 5JD.  
Tel: +44 (0) 333 777 4444