

Designed for Business

The Professional Printer Range

brotherzone.co.uk



Contents

Designed to help you grow	04-05
Why choose Brother for business?	06-07
Designed to support your business	08-09
What do we want from their printer?	10-11
Designed for security	12-13
Designed to boost productivity	14-15
Taking sustainability seriously	16-17
Designed to keep costs low	18-19
Designed to improve workflow	20-21
Designed to last	22-23
Designed around your customers	24-25
Our outstanding laser portfolio	26-27
Designed for reliability	28-29
Mono laser series lineup	30-37
Designed for productivity	38-39
Colour laser series lineup	40-45
Designed for flexibility	46-47
X-Series range lineup	48-51



Designed to help you grow

Businesses are always looking for new ways to be more productive and make the most of technology. And with a market worth £294* million in the UK alone, business printing presents a big opportunity for you. We're here to help you make the most of it.

Building on our position as number two** in the UK laser market, we've added to our portfolio for businesses with a range of high-performance inkjet printers, giving you and your customers more choice, more possibilities and more reasons to choose Brother.

With this new lineup and complete offer, you'll be able to meet the needs and specifications of even the most demanding business customers – all while unlocking new revenue and opportunities from the scalability of the range.

* Ex vat Jan-Dec 2018 Context data

**Context data: January - December 2017 vs 2018



Why choose Brother for business?

We've designed our complete lineup to give you and your customers more choice and more flexibility. Whether it's through customisable machines or the ability to offer both transactional and contractual sales, we're committed to giving you and your customers the best options in the market.

We don't sell directly to customers, so we can focus our energy on helping you build strong relationships and maximise every opportunity that comes your way.

- 30 years' experience producing class-leading printers
- Superb long-term value and low cost of ownership with high-capacity toners in-box
- All products backed by our unrivalled 'At your side' support
- Award-winning products that have been extensively trialled and recommended for their faultless reliability by leading independent testers BLI
- Named PC Pro 'Best Printer Brand of the Year' for five years consecutively, 2013-18

Designed to support your business

Selling with Brother, you're guaranteed the close, 'At your side' service that we've built our business and reputation on. After all, you play a big part in our success, so it's only right we do everything we can to help you grow your business and succeed too.

We've designed our latest business lineup to deliver all the performance, reliability and choice you could need for any kind of customer. This brochure will help you get to know the range better and see what it has to offer.



What do SMEs want from their printer?*



Brother's extensive laser portfolio offers print solutions for all your business customers. With a flexible and scalable feature set developed specifically with SMEs in mind, you can offer your customers the reliable, professional printers they need.



Reliability

- Can be left to print large quantities without paper jams
- Minimal maintenance and infrequent breakdowns
- Long-lasting consumables



Quality

- Clear images
- Quiet machines
- Award winning



Speed

- Quick-use LCD screens
- High speed across colour and mono
- High speed scanning

* Source: UK SME Customer Immersion, July 2017

Designed for security

Security is a major concern for businesses and it's crucial that any print solution is designed with robust measures in place to keep your customers and their data safe. Our professional range does just that. Customers are protected at the network level using end-to-end encryption and port-based access control, designed to let them connect and share documents with confidence. Plus, our devices use anti-intrusion detection software to constantly monitor and protect against the threat of hacking.

There's the option of PIN and ID Card-protected printing to ensure printouts don't fall into the wrong hands, and Secure Function Lock to give them better control of their print environment by restricting certain capabilities to specific users.



A close-up, angled view of a business machine's control panel. The panel features a color touchscreen with two large, glowing icons: a network diagram on the left and a Wi-Fi symbol on the right. Below the screen is a numeric keypad and several function buttons. The machine has a sleek, modern design with a light gray top and a darker gray base. The background is a solid dark gray.

Designed to boost productivity

Our business machines are designed with a simple idea in mind: help your customers spend less time dealing with print and more time focused on their business.

High-capacity automatic document feeders, expandable paper handling and the ability to include multiple media types in each tray should keep things running smoothly. While other clever features help your customers connect to smarter ways of working. Like the ability to scan direct to network folders and cloud services, helping customers make remote working a success.

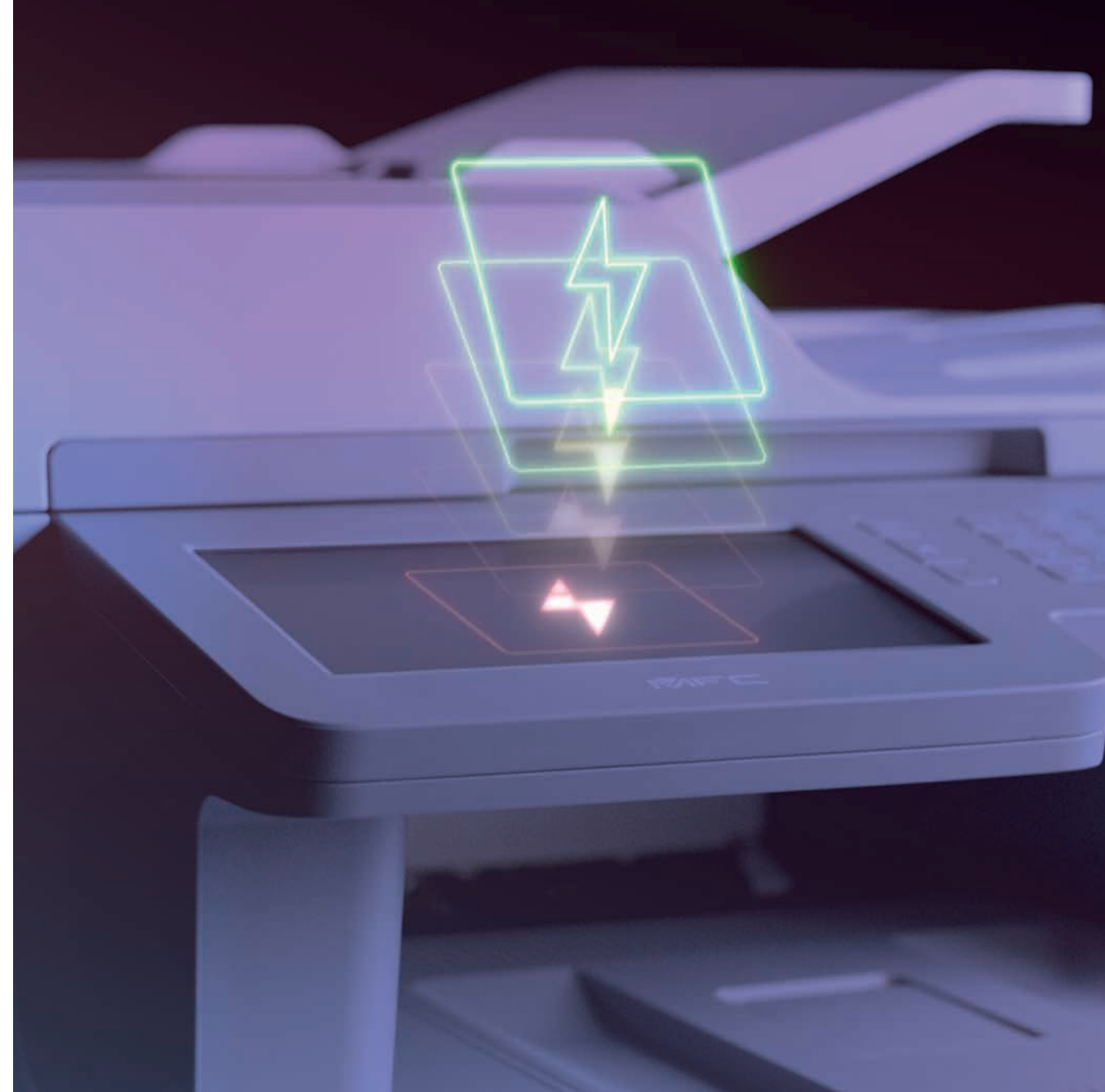
- Print direct from smart phones and tablets
- Enable Wireless direct printing to print from mobile devices and laptops without accessing the network
- Our BR-Admin software enables you to manage all the fleet from a central location to help reduce downtime and increase efficiency.

Taking sustainability seriously

We know your business customers take their sustainability responsibilities seriously. As a supplier, we think it's important to help them minimise their impact on the environment. We are committed to sending zero waste to landfill, so we'll recycle your customers' used ink and toner cartridges at no extra cost.

We're dedicated to 'designing out' waste from our product cycle to create a circular economy – recovering and regenerating products and materials at the end of each service life. As a result, Brother UK has been honoured with a Queen's Award for Enterprise, in recognition of our outstanding achievements in sustainable development.

For the updated professional range, we've created a suite of practical, environmentally friendly features. Printers come complete with a special Eco Mode that reduces power consumption, and there is also a Toner Save mode and automatic 2-sided printing to eliminate unnecessary waste.



Designed to keep costs low

High yield inks and toners give your customers more for their money, lasting longer and performing better than non-genuine compatibles. In fact, independent testing has shown that our expertly engineered Genuine Supplies deliver 57% more output on average than non-genuine equivalents.

The devices themselves come ready-made to save your customers money with intelligently designed extras. Toner Saver mode can cut supplies costs by up to a third, automatic 2-sided printing eliminates waste, and options such as print quotas and restricted colour printing ensure your customers are always in control of their spend.

Eliminate paper waste further through embedded print management solutions such as:



Designed to improve workflow

The professional range features technology to improve workflow for any team, including Scan/print to USB and connect via Office and cloud applications for improved access in the office and on the move. Similarly, solutions such as barcode utility, document routing software, allow your customers to streamline their document management systems with barcode scanning. Your customers can even design their own shortcuts on the fully customisable touchscreens to speed things up.

All of our machines are also designed to fit seamlessly into your customers' existing document management system.



Designed to last

Our complete business lineup is designed to deliver the dependable products your customers need. Constructed using robust materials and longer-lasting parts to ensure smooth operation, businesses can count on our machines, print after print, month after month, year after year.

Tested and trusted by Buyers Lab

Examined over two months and 80,000 pages, the machines tested by Buyers Lab measured up perfectly. No misfeeds. No service callouts required.

For even more peace of mind, we also offer a 12-month warranty and provide UK-based customer support, designed to reassure your customers and give you added confidence that you've recommended the right supplier.



Designed around your customers

With our professional printer range, the customisation and flexibility doesn't stop with the machines. As part of our Managed Print Services approach, we build a deep understanding of each business and its specific print environment. We'll work with you to assess how machines are being used, where they are placed and other factors to help us optimise a comprehensive solution that fits just right.

Learn more about balanced deployment and selling Managed Print Services with Brother at brotherzone.co.uk/mps-zone



Our outstanding laser portfolio

You might know that Brother is one of the leading brands for laser printers, but you might not know just how much our range of laser machines has grown. We've got something to suit the needs of every business, from compact single function printers to large-capacity, colour all-in-ones.

The sheer breadth of the range means you have a fantastic variety of products to offer. And you're not restricted to transactional sales with Brother. We also offer our high-performance laser machines on our contractual Managed Print Service, which can help you bring in continuous revenue.

Whatever it is your SME customers are looking for, you can count on Brother to offer quality they can depend on.

Tailored to your customers' needs



Designed to meet the needs of high-volume users, Brother's SME colour and mono laser ranges let your customers print with confidence, offering fast print and scan times and lower costs thanks to super and ultra high yield toners. Add to that enhanced security, intelligent mobile connectivity and expandable paper trays, and you have a printer that satisfies even the toughest demands in the office.

There are numerous customisation options, whether that's creating shortcuts for certain functions or using Brother Solutions Interface (BSI) to integrate your customers preferred software. The scalability of our range also offers you additional profit from accessory sales such as extra paper trays and mailboxes.



Designed for reliability

The mono laser range designed for business

Our award-winning mono laser range is designed to give your business customers the performance they need, in a package they can trust. Ideal for up to 10,000 pages a month and capable of super-high print speeds, these machines require minimal maintenance and are more than ready to keep up with the demands of life in business.

Mono laser L5000 series



MFC-L5750DW plus 2 x LT6500 lower trays

Models within the range:

HL-L5000D	DCP-L5500DN
HL-L5100DN	MFC-L5700DN
HL-L5100DNT	MFC-L5750DW
HL-L5200DW	

Up to 3,500 pages per month

Up to 5 users

Print, copy, scan and fax in A4

Extra customisation options available



Up to 40ppm print speed

250 sheet paper tray

Duplex printing

Up to 1,340 sheet input

Up to 8,000 page toner

USB, network, parallel and wireless connectivity options

High speed scanning

Low running costs

Ideal for small workgroups

High quality printing

Mobile/tablet connectivity

L5000 series

product line up



HL-L5000D



HL-L5100DN



HL-L5100DNT



HL-L5200DW



DCP-L5500DN



MFC-L5700DN



MFC-L5750DW



Mono laser L6000 series



HL-L6400DW
plus TT4000 tower tray and MX4000 Mailbox

Models within the range:

HL-L6300DW	MFC-L6800DW
HL-L6300DWT	MFC-L6800DWT
HL-L6400DW	MFC-L6900DW
HL-L6400DWT	MFC-L6900DWT
DCP-L6600DW	

Up to 10,000 pages per month

Up to 20 users

Print, copy, scan and fax in A4

Scalable customisation options available



Up to 50ppm print speed

520 sheet paper tray

Up to 2,650 sheet input

Up to 20,000 page toner

USB, network, parallel and wireless connectivity options

Mobile/tablet connectivity

Mailbox option

High-volume printing

Very low running costs

Embedded NFC card reader

High speed, high quality printing

High speed scanning

Security/pull printing options

Mobile/tablet printing connectivity

L6000 series

product line up



HL-L6300DW



HL-L6300DWT



HL-L6400DW



HL-L6400DWT



MFC-L6800DW



MFC-L6800DWT



MFC-L6900DW



MFC-L6900DWT



HL-L6400DW

All models support
additional tower tray



TT4000 tower tray



Designed for productivity

The colour laser range designed for business

Businesses are always looking for ways to be more productive, and Brother's business laser range will help you offer them just that. We've combined fast print speeds with minimal maintenance and long-lasting supplies to keep pages printing and businesses moving. Rigorously tested by Buyers Lab, our colour lasers are proven to deliver professional print quality time after time, so your customers can always count on them to help make the best impression.

Colour laser L8000 series



MFC-L8900CDW plus 2 x LT340CL lower tray

Models within the range:

HL-L8260CDW	MFC-L8690CDW
HL-L8360CDW	MFC-L8900CDW
DCP-L8410CDW	

Up to 4,000 pages per month

Up to 10 users

Print, copy, scan and fax in A4

Optional printing via MP paper tray
(up to 50 sheets)



Up to 31ppm print speed
(mono and colour)

Professional colour output

250 sheet paper tray

Up to 2,650 sheet input

USB, network and wireless
connectivity options

Mobile/tablet connectivity

Super high yield toners

Professional colour printing

Low running costs

Sharing between users

Duplex printing

High speed scanning

Colour laser L9000 series



MFC-L9570CDW
plus TC4000 tray connector and TT4000 tower tray

Models within the range:

HL-L9310CDW

MFC-L9570CDW

Up to 6,000 pages per month

Up to 20 users

Print, copy, scan and fax in A4

Scalable customisation options available



Up to 31ppm print speed
(mono and colour)

250 sheet paper tray

9,000 page toners

Up to 2,650 sheet input

USB, network and wireless
connectivity options

Mobile/tablet connectivity

Duplex print, copy, scan and fax

Cloud connectivity

High volume professional printing

Ultra low running costs

Embedded NFC card reader

Class leading scanning speeds

Security/pull printing options

L8000 series

product line up



HL-L8260CDW



HL-L8360CDW



MFC-L8690CDW



MFC-L8900CDW



DCP-L8410CDW

L9000 series

product line up



HL-L9310CDW



MFC-L9570CDW

HL-L9310CDW



TC4000 Connector

All models support
additional tower tray



TT4000 tower tray



Designed for flexibility

The inkjet range designed for business

On top of our leading laser machines, we now offer high-performance professional inkjets with our X-Series. Designed to mean business, these A3 machines deliver professional quality print, scan and copy up to A3, time after time. Added extras help your customers work smarter, with NFC connectivity for secure print job release and enhanced security features keeping data safe. And with enterprise level security features and yields of up to 6000 pages, they give performance normally associated with high end laser printers.

X-Series Professional A3 inkjet range



MFC-J6947DW plus cabinet

Models within the range:

HL-J6000DW

HL-J6100DW

MFC-J5945DW

MFC-J6945DW

MFC-J6947DW

Up to 22ipm print speed

Up to 5 users

3,000-5,000 prints per month

Print, copy, scan and fax up to A3

Standalone cabinet option



Up to 750 sheet paper tray

Duplex printing

Optional high yield inks available -
BK 6,000 pages, C/M/Y 5,000 pages

USB, network and wireless
connectivity options

Mobile/tablet connectivity

High-volume printing

Very low running costs

Embedded NFC card reader

High speed scanning

X-Series

product line up

MFC-J6945DW



HL-J6000DW



MFC-J5945DW



HL-J6100DW



MFC-J6947DW



brother
at your side

Brother UK Ltd.

Shepley Street, Audenshaw,
Manchester, M34 5JD.

Tel: +44 (0) 333 777 4444

brotherzone.co.uk/designed-for-business

All specifications correct at time of printing, May 2019. CD3125.

